



OPEN ACCESS

# Non-occupational physical activity and risk of cardiovascular disease, cancer and mortality outcomes: a dose–response meta-analysis of large prospective studies

Leandro Garcia <sup>1,2</sup> Matthew Pearce <sup>1</sup> Ali Abbas,<sup>1</sup> Alexander Mok,<sup>1,3</sup> Tessa Strain <sup>1</sup> Sara Ali,<sup>4</sup> Alessio Crippa,<sup>5</sup> Paddy C Dempsey,<sup>1,6</sup> Rajna Golubic,<sup>1,7</sup> Paul Kelly <sup>8</sup> Yvonne Laird,<sup>9,10</sup> Eoin McNamara,<sup>1,11</sup> Samuel Moore,<sup>4</sup> Thiago Herick de Sa,<sup>12</sup> Andrea D Smith,<sup>1,13</sup> Katrien Wijndaele,<sup>1</sup> James Woodcock,<sup>1</sup> Soren Brage <sup>1</sup>

► Additional supplemental material is published online only. To view, please visit the journal online (<http://dx.doi.org/10.1136/bjsports-2022-105669>).

For numbered affiliations see end of article.

## Correspondence to

Dr Soren Brage, MRC Epidemiology Unit, University of Cambridge School of Clinical Medicine, Cambridge CB2 0QQ, UK; [soren.brage@mrc-epid.cam.ac.uk](mailto:soren.brage@mrc-epid.cam.ac.uk)

LG, MP, AA, AM and TS contributed equally. JW and SB contributed equally.

Accepted 15 November 2022  
Published Online First  
28 February 2023



© Author(s) (or their employer(s)) 2023. Re-use permitted under CC BY. Published by BMJ.

**To cite:** Garcia L, Pearce M, Abbas A, et al. *Br J Sports Med* 2023;**57**:979–989.

## ABSTRACT

**Objective** To estimate the dose–response associations between non-occupational physical activity and several chronic disease and mortality outcomes in the general adult population.

**Design** Systematic review and cohort-level dose–response meta-analysis.

**Data sources** PubMed, Scopus, Web of Science and reference lists of published studies.

**Eligibility criteria** Prospective cohort studies with (1) general population samples >10 000 adults, (2) ≥3 physical activity categories, and (3) risk measures and CIs for all-cause mortality or incident total cardiovascular disease, coronary heart disease, stroke, heart failure, total cancer and site-specific cancers (head and neck, myeloid leukaemia, myeloma, gastric cardia, lung, liver, endometrium, colon, breast, bladder, rectum, oesophagus, prostate, kidney).

**Results** 196 articles were included, covering 94 cohorts with >30 million participants. The evidence base was largest for all-cause mortality (50 separate results; 163 415 543 person-years, 811 616 events), and incidence of cardiovascular disease (37 results; 28 884 209 person-years, 74 757 events) and cancer (31 results; 35 500 867 person-years, 185 870 events). In general, higher activity levels were associated with lower risk of all outcomes. Differences in risk were greater between 0 and 8.75 marginal metabolic equivalent of task-hours per week (mMET-hours/week) (equivalent to the recommended 150 min/week of moderate-to-vigorous aerobic physical activity), with smaller marginal differences in risk above this level to 17.5 mMET-hours/week, beyond which additional differences were small and uncertain. Associations were stronger for all-cause (relative risk (RR) at 8.75 mMET-hours/week: 0.69, 95% CI 0.65 to 0.73) and cardiovascular disease (RR at 8.75 mMET-hours/week: 0.71, 95% CI 0.66 to 0.77) mortality than for cancer mortality (RR at 8.75 mMET-hours/week: 0.85, 95% CI 0.81 to 0.89). If all insufficiently active individuals had achieved 8.75 mMET-hours/week, 15.7% (95% CI 13.1 to 18.2) of all premature deaths would have been averted.

**Conclusions** Inverse non-linear dose–response associations suggest substantial protection against a range of chronic disease outcomes from small increases in non-occupational physical activity in inactive adults.

**PROSPERO registration number** CRD42018095481.

## INTRODUCTION

Cardiovascular disease (CVD) is the leading cause of death globally, responsible for 17.9 million annual deaths in 2019,<sup>1</sup> whereas cancers were responsible for 9.6 million deaths in 2017.<sup>1</sup> Both conditions top the global disease burden with respect to disability-adjusted life-years.<sup>2</sup> The relative contribution of various risk and protective factors to the incidence of, and mortality from, these conditions is an ongoing debate.

Higher levels of physical activity (PA) are associated with lower risk of all-cause mortality, CVD and some site-specific cancers.<sup>2–8</sup> The highest quality evidence for these associations and the population impact of low PA levels comes from disease-specific meta-analyses. However, differing methods used in previous meta-analyses limit comparability of relative risks across different outcomes. The only initiative to consistently consider the population impact across diseases (five in total) is the Global Burden of Disease (GBD) study, which uses estimates of total PA, including occupational activity.<sup>9</sup> This is problematic as occupational activity is generally poorly measured compared with non-occupational activity and estimates of activity at work often dwarf the non-occupational component. One reason for this is the use of gross metabolic equivalent of task (MET)-hour/week to quantify PA volume. Sedentary office work may be considered to cost approximately 1.25 METs, of which 1 MET represents resting metabolic rate. Non-occupational activity is typically more intense (eg, walking at 4.0 km/hour is approximately 3 METs), meaning the relative contribution of the resting metabolic rate is smaller. Including low-intensity high-duration activities such as occupational activity without marginalising the resting component can therefore distort the PA exposure dramatically. Furthermore, even when occupational PA is well measured, it remains unclear whether it has similar health benefits to non-occupational activity.<sup>10</sup> These factors add statistical noise, decreasing the accuracy of the

estimated associations, and may underestimate the contribution of non-occupational PA.

Accurate estimation of the dose–response association between PA and disease outcomes, combined with prevalence estimates, is a prerequisite to assessing the population disease burden of insufficient PA and the potential impact of changes to population levels of PA. Modelling studies that evaluate public health strategies aimed at increasing population activity levels have found that the shape of the dose–response association makes a significant difference when quantifying population health impacts.<sup>6</sup>

Our objective was to quantify dose–response associations between non-occupational PA and several CVD, cancer and mortality outcomes using a novel harmonisation framework to overcome the challenges posed by different PA measurement methods. This framework allowed us to compare studies measuring and reporting PA in a wide variety of ways on the same activity exposure scale of marginal MET-hours per week (mMET-hours/week). This meant we could be more inclusive of the available evidence than previous meta-analyses and we could explore the dose–response relationships between non-occupational PA and nine site-specific cancers for the first time. To contextualise our results for public health promotion, we generated potential population impact fractions (PIFs) to estimate the proportion of preventable deaths and disease outcomes at different non-occupational PA levels.

## METHODS

The study protocol is available at PROSPERO (registration number CRD42018095481).

### Eligibility criteria

Online supplemental eMethods 1 shows the study inclusion and exclusion criteria. We included prospective cohort studies that followed adults ( $\geq 18$  years) without pre-existing conditions, reported PA at baseline in at least three ordinal exposure levels and reported risk estimates for the examined outcomes. We excluded studies with  $< 10\,000$  participants to limit potential bias from small study sizes with positive results; this is the required cohort sample size for outcomes with up to 70% of subjects in the unexposed group (ie, no or less physically active), expected incidence rate in the unexposed group around 15% or more, and assumed relative risk of 0.85, when type I and type II errors are 0.05 and 0.20, respectively. These are reasonable parameters for the investigated populations, exposure and endpoints. We also excluded studies where the follow-up period was  $< 3$  years to minimise reverse causality bias, which is in accordance with the findings of Lee *et al.*<sup>11</sup>

Only articles that examined leisure-time PA, alone or in combination with other domains or specific types of activity, were included. We excluded articles whose measures of PA contained occupational activity that could not be factored out and that investigated individual domains of PA that did not include leisure-time activity (eg, transport-related PA only).

The outcomes of interest were the following:

- ▶ All-cause, total CVD and total cancer mortality.
- ▶ Total CVD, coronary heart disease, stroke and heart failure incidence (fatal and non-fatal events combined).
- ▶ Total and site-specific (head and neck, myeloid leukaemia, myeloma, gastric cardia, lung, liver, endometrial, colon, breast, bladder, rectum, oesophageal, prostate, and kidney) cancer incidence (fatal and non-fatal events combined). These site-specific cancers were selected based on previously reported associations with PA.<sup>8</sup>

### Search and selection process

We searched PubMed, Scopus, Web of Science and the reference lists of reviews retrieved from our systematic review, known to the authors or cited in the 2018 US Physical Activity Guidelines Advisory Committee Scientific Report.<sup>12</sup> Online supplemental eMethods 2 details the systematic search strategy. We considered peer-reviewed articles in any language published in academic journals until February 2019.

Titles and abstracts, and subsequently full texts, were screened independently twice for eligibility (online supplemental eFigure 1). Disagreements were resolved by discussion.

If multiple articles reported results on the same cohort and outcome, we followed specific criteria (online supplemental eMethods 3) to select one.

### Data extraction

Data from each paper were extracted by one reviewer and double-checked independently by a second reviewer. Disagreements were checked against the full text and resolved by discussion.

We extracted data on publication (first author, year of publication), study characteristics (country, cohort name, sample size, age and sex of participants, and duration of follow-up), PA exposure assessment (instrument, domains of activity and exposure categories) and outcome assessment (defined using the International Classification of Disease 10th revision (ICD-10) codes as reported in the PROSPERO registration and online supplemental eMethods 1). We extracted whether fatal, non-fatal or the combination of fatal and non-fatal events was tallied. We also identified how original study analyses had considered baseline morbidity (exclusion at baseline or statistical adjustment in multivariable regression models) and early incident cases during follow-up.

For each exposure category, we extracted information to quantify PA volume, number of cases, number of participants and/or person-years of follow-up, and risk estimates with 95% CIs. Risk estimates from the most adjusted model were used. When available, risk estimates of the most adjusted model without adiposity-related covariates (eg, body mass index (BMI), waist circumference) were retrieved and used in sensitivity analyses. Exposure data were extracted to the level of precision reported in the published study before being harmonised to PA volume in mMET-hours/week. Risk estimates were extracted exactly as reported. Results reported separately by sex or other attributes (eg, age, ethnicity) or for multiple cohorts within an article were treated as separate associations. If the original publication did not fully report information required for the meta-analysis, data were obtained from other publications using the same cohort, imputation procedures (online supplemental eMethods 4) or by contacting the authors. We had no control over the methods used to handle confounders and missing data in the original analyses.

### PA exposure harmonisation

#### Overview of harmonisation

A comprehensive data harmonisation was conducted to combine PA data from different sources. We harmonised reported PA exposure levels from all included studies into a common metric of non-occupational PA volume in mMET-hours/week, reflecting the rate of energy expenditure outside of work, above the resting metabolic rate (1 MET). This allows correct equating of PA volume of time spent at different PA intensity levels.<sup>13</sup> The principles of each aspect of our harmonisation procedure are described in the following sections and presented in a flow chart available in our OSF repository. The last columns of the table on

'Details of included articles and original and harmonized exposures' in the same OSF repository contain the details of how the original PA exposure categories of each study were harmonised to mMET-hours/week values.

### Frequency, duration and intensity assumptions

PA exposures described in studies as frequency and duration measures were converted to weekly duration. If session duration was not provided, we assumed a duration of 0.75 hours/session (0.5 hours/session in sensitivity analyses). Categorical frequency data (eg, never, sometimes and often) were converted to weekly duration using assumptions for both frequency (eg, 0, 2 and 5 sessions per week) and duration of sessions. When PA intensity was not explicitly described, we considered the reported activities as light, moderate or vigorous based on the description provided and using the Compendium of Physical Activities.<sup>14</sup> We assigned mMET values of 1.5 for light, 3.5 for moderate and moderate-to-vigorous, and 7.0 for vigorous PA (1 mMET less in sensitivity analyses).

### Converting absolute energy expenditure to MET values

For studies reporting energy expenditure without adjustment for body weight (eg, kJ/day, kcal/week), energy expenditure was divided by reported weights to derive MET equivalents (1 MET=1 kcal/kg/hour). If unavailable, body weight was calculated from reported BMI and height. If BMI was reported without height, a mean value from national survey data was used for height.

### Subtracting resting energy expenditure from estimates of PA

To marginalise studies reporting volume of PA in gross units, 1 MET-hour was subtracted for each hour of activity. If the mean duration was not available, we used a conversion equation derived from all remaining studies where both volume and duration were available (online supplemental eMethods 5).

### Isolating the non-occupational component of aggregate PA estimates

Some articles provided aggregated exposures of non-occupational and occupational PA alongside other behaviours, such as sleep or sedentary time. When quantified information about these behaviours was available, this was subtracted from the point estimate of each exposure category. If no quantifiable data were available, we assumed occupational activity to be 40 hours/week at 1.25 MET (or 0.25 mMET) or the value of the lowest exposure category and subtracted this from all exposure categories.

### Meta-analytical methods

We conducted a meta-analysis for any outcome with results from at least four cohorts. Where necessary, risk estimates were recalculated to set the least active category as the referent.<sup>15</sup> For studies reporting only stratified results (eg, sex or ethnicity), we combined stratum-specific risks into overall population estimates using fixed-effect meta-analysis.

We performed a two-stage random-effects meta-analysis. In the first stage, we estimated study-specific dose–response coefficients using generalised least squares to incorporate the correlation within each set of log-relative risks.<sup>16 17</sup> In the second stage, we estimated the pooled coefficients by combining study-specific dose–response coefficients using restricted maximum likelihood,<sup>18 19</sup> with cohorts weighted by the inverse of their variance. We assumed non-linearity of dose–response associations,<sup>2–4 7 9 13</sup>

and thus modelled them by fitting restricted cubic splines. Given that the volumes of PA reported in most studies were at the lower end of the exposure range and that there is greater uncertainty about the reliability of very high levels of self-reported PA, we set three knots at the 0th, 37.5th and 75th percentiles of person-years rather than persons (0th, 42.5th and 85th percentiles in sensitivity analyses). The slope was fixed at the last knot. If the statistical model was unable to converge, we progressively increased the percentile for the upper knot by 1% until model convergence. Dose–response curves were drawn from 1000 points evenly distributed between 0 mMET-hour/week and the largest PA dose observed in the cohorts included for the outcome of interest.

To investigate the potential effect of study-level confounders on the pooled results across outcomes, we conducted subgroup analyses with the 11 studies that reported results for all all-cause, CVD and cancer mortality outcomes and contrasted them with results from the corresponding main analysis. We also conducted subgroup analysis by sex using studies that reported separate results for men and women.

### Estimation of population health impact

PIFs were calculated for all outcomes based on PA exposure levels in the population of all included cohorts for a given outcome (see formula in online supplemental eMethods 6).<sup>20</sup> PIFs were calculated for three exposure levels based on the equivalents of the WHO moderate-to-vigorous aerobic PA recommendations for adults<sup>21</sup>: 8.75 mMET-hours/week (the minimum recommended level, equivalent to 2.5 hours/week of PA at an intensity of 3.5 mMET, such as brisk walking), 17.5 mMET-hours/week (upper bound of recommended levels for health benefits) and 4.375 mMET-hours/week (half the minimum recommended level). The risk estimates used to calculate PIFs were taken from the dose–response curves, which pooled the most adjusted associations provided by the individual studies.

### Risk of bias assessment

We explored the impact of six potential sources of bias in individual articles and our meta-analytical procedures: how studies had analysed participants with other morbidities, whether they excluded early incident cases during follow-up, duration of follow-up, imputation procedures for missing data, aspects of our approach to exposure harmonisation and separation of occupational PA. For each of these, we contrasted the overall risk estimates between groups of studies with different characteristics. This was done for the five outcomes with the largest number of separate results (all-cause mortality, and total CVD and cancer mortality and incidence), using a fixed PA level of 8.75 mMET-hours/week, relevant to the six sources of bias.

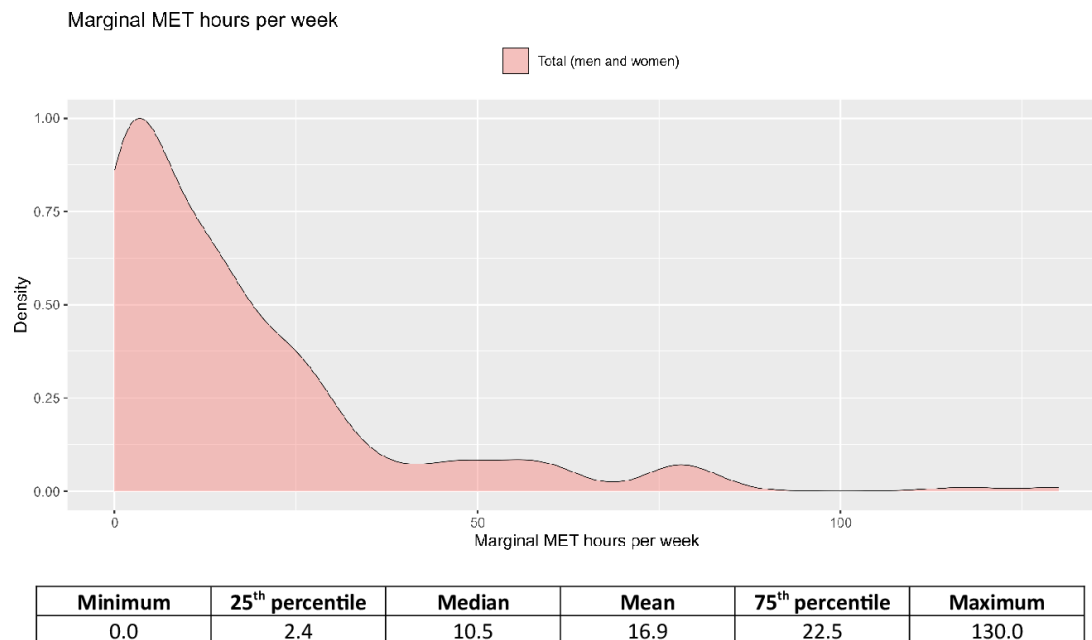
### Software, data and code availability

Analyses were performed using R V.4.0.5 and the *dosresmeta* package (V.2.0.1).<sup>19</sup> An interactive interface to visualise the dose–response associations was developed using the Shiny package (V.1.0.5). Syntax for all analyses and the interactive interface are available at <https://github.com/meta-analyses/>.

### Patient and public involvement

Patients and the public were not involved in the development of this work.





**Figure 1** Distribution of marginal MET-hours/week for cohorts included in the all-cause mortality analysis. The exposure distribution for cohorts included in the analysis of other outcomes is available at <https://shiny.mrc-epid.cam.ac.uk/meta-analyses-physical-activity/>. MET, metabolic equivalent of task.

## RESULTS

### Identified literature

We screened titles and abstracts of 48 525 articles, of which 1280 were selected for full-text screening. A total of 196 articles<sup>222–216</sup> were included in the meta-analysis (online supplemental eFigure 1), covering 94 cohorts and reporting 330 separate results. The evidence base was largest for all-cause mortality (50 results; 163 415 543 person-years, 811 616 events), total CVD incidence (37 results; 28 884 209 person-years, 74 757 events) and total cancer incidence (31 results; 35 500 867 person-years, 185 870 events). Details of all selected and excluded articles can be found in our OSF repository, and data underlying each of the dose–response estimations can be downloaded at <https://shiny.mrc-epid.cam.ac.uk/meta-analyses-physical-activity/>.

### Primary dose–response analyses

Most study participants reported non-occupational PA levels below 17.5 mMET-hours/week (76% of person-years), with almost all data below 35 mMET-hours/week (94% of person-years). Figure 1 shows the exposure distribution for the cohorts included in the all-cause mortality analysis.

Inverse, curvilinear dose–response associations between PA and most outcomes were observed, with stronger associations at lower volumes of PA. In most cases, diminishing marginal differences in risk and increasing uncertainty were observed at high PA volumes, particularly beyond 17.5 mMET-hours/week. Interactive dose–response curves and the exposure distributions are available at <https://shiny.mrc-epid.cam.ac.uk/meta-analyses-physical-activity/>.

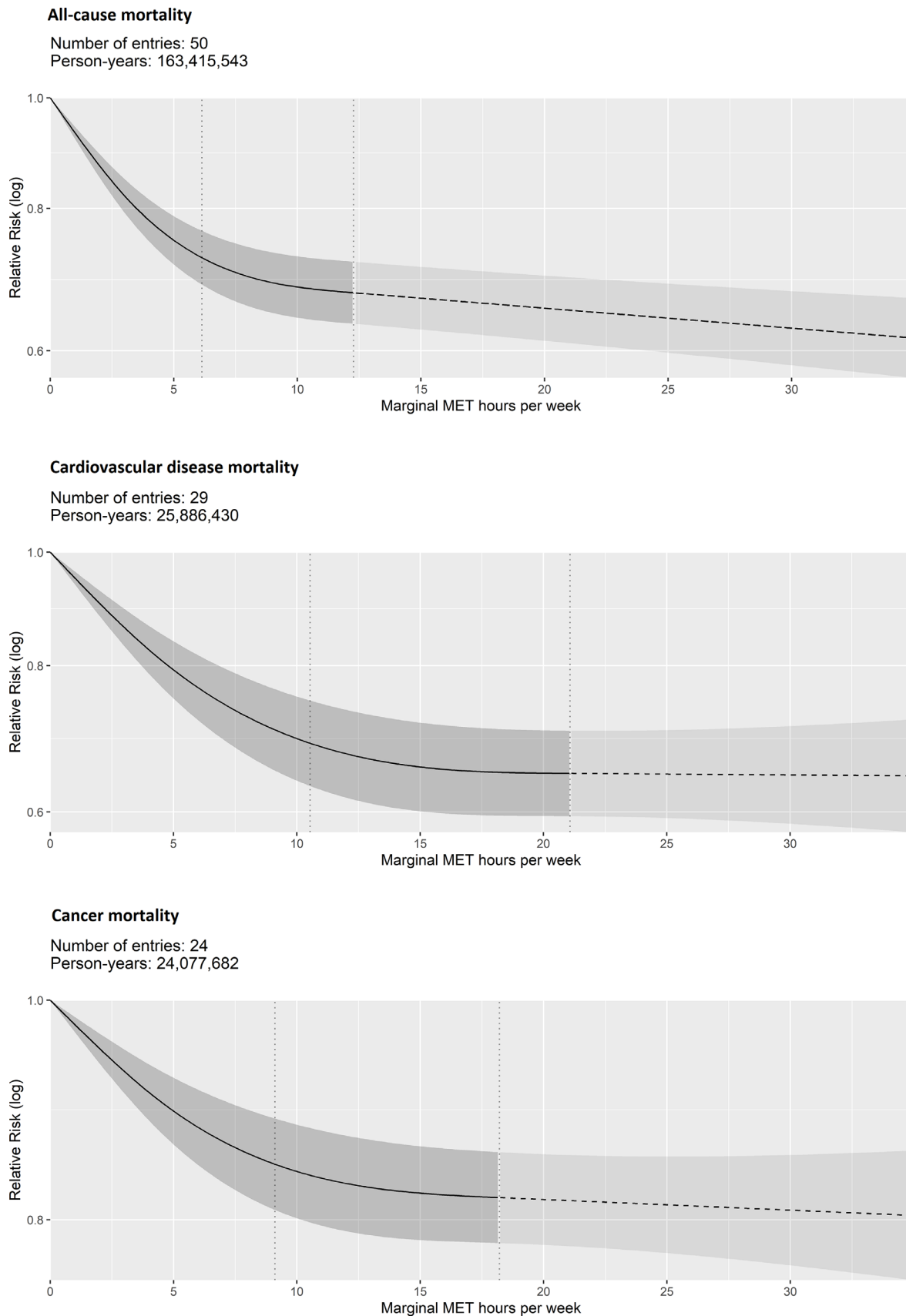
The association was stronger and more curvilinear for all-cause and CVD mortality than for cancer mortality (figure 2, table 1). Compared with inactive individuals, adults accumulating 8.75 mMET-hours/week had 31% (95% CI 27 to 35) and 29% (95% CI 23 to 34) lower risk of all-cause and CVD mortality, respectively, whereas the risk difference for total cancer mortality was 15% (95% CI 11 to 19).

A strong curvilinear association was observed for total CVD incidence (27% lower risk (95% CI 21 to 31) at 8.75 mMET-hours/week). However, the associations were weaker and more linear for the incidence of specific CVD outcomes (coronary heart disease, heart failure and stroke), with the strongest association observed for coronary heart disease (21% lower risk (95% CI 16 to 26) at 8.75 mMET-hours/week) (figure 3, table 1).

The association was weaker and more linear for total cancer incidence (12% lower risk (95% CI 8 to 15) at 8.75 mMET-hours/week). For the incidence of site-specific cancers, curvilinear and stronger associations were observed for head and neck, myeloid leukaemia, myeloma, and gastric cardia (from 35% to 22% lower risk at 8.75 mMET-hours/week). Weaker and more linear associations were observed for lung, liver, endometrial, colon and breast (from 16% to 5% lower risk at 8.75 mMET-hours/week). Non-significant associations were observed for bladder, oesophageal, prostate and rectal cancer (figure 4, table 1). No eligible studies were available for malignant melanoma.

### Potential population impact

Assuming a causal relationship between non-occupational PA and the examined health outcomes, shifting the distribution of non-occupational PA in the cohorts towards the equivalent recommended level of moderate-to-vigorous aerobic activity (8.75 mMET-hours/week) would have averted a substantial fraction of the population disease burden. For example, if all individuals accumulated at least 8.75 mMET-hours/week, then 15.7% (95% CI 13.2 to 18.2), 12.3% (95% CI 9.4 to 15.2) and 7.1% (95% CI 5.1 to 9.0) of all-cause, CVD-related and cancer-related deaths, respectively, potentially would have been averted. Additionally, 10.9% (95% CI 8.4 to 13.3) and 5.2% (95% CI 3.6 to 6.9) of all incident cases of CVD and cancer would have been prevented. Notably, 10.1% (95% CI 8.3 to 11.9) of all deaths would have been prevented if all adults achieved at least half this PA level (table 1).



**Figure 2** Dose–response association between non-occupational physical activity and mortality outcomes. Vertical dashed lines: cubic spline knots (0th, 37.5th and 75th percentiles of person-years); dashed line beyond the upper knot: constrained to be linear. MET, metabolic equivalent of task.

**Table 1** Relative risk of mortality and incidence of cardiovascular diseases and cancers at three physical activity levels in relation to 0 mMET-hours/week and respective potential impact fractions

Outcomes	4.375 mMET-hours/week		8.75 mMET-hours/week		17.5 mMET-hours/week	
	RR (95% CI)	PIF (95% CI)	RR (95% CI)	PIF (95% CI)	RR (95% CI)	PIF (95% CI)
<b>Mortality</b>						
All-cause mortality	0.77 (0.73 to 0.80)	10.11 (8.32 to 11.91)	0.69 (0.65 to 0.73)	15.66 (13.16 to 18.15)	0.66 (0.62 to 0.70)	18.75 (16.09 to 21.39)
Total CVD	0.81 (0.77 to 0.85)	6.02 (4.42 to 7.69)	0.71 (0.66 to 0.77)	12.25 (9.37 to 15.17)	0.65 (0.60 to 0.71)	17.05 (13.92 to 20.19)
Total cancer	0.90 (0.88 to 0.93)	3.68 (2.54 to 4.86)	0.85 (0.81 to 0.89)	7.05 (5.1 to 9.00)	0.82 (0.78 to 0.86)	9.29 (7.36 to 11.22)
<b>CVD incidence (fatal and non-fatal events combined)</b>						
Total CVD	0.83 (0.79 to 0.87)	5.29 (3.93 to 6.70)	0.73 (0.69 to 0.79)	10.86 (8.43 to 13.31)	0.67 (0.63 to 0.72)	15.42 (13.01 to 17.85)
Coronary heart disease	0.86 (0.83 to 0.90)	5.51 (3.95 to 7.11)	0.79 (0.74 to 0.84)	10.28 (7.61 to 12.96)	0.74 (0.69 to 0.80)	13.58 (10.51 to 16.64)
Stroke	0.86 (0.83 to 0.90)	5.53 (3.96 to 7.15)	0.80 (0.75 to 0.85)	9.77 (7.31 to 12.24)	0.77 (0.72 to 0.82)	12.37 (9.63 to 15.10)
Heart failure	0.90 (0.85 to 0.96)	2.23 (0.80 to 3.89)	0.84 (0.75 to 0.93)	4.63 (1.90 to 7.66)	0.77 (0.68 to 0.87)	7.86 (4.31 to 11.68)
<b>Cancer incidence (fatal and non-fatal events combined)</b>						
Total cancer	0.93 (0.91 to 0.95)	2.53 (1.66 to 3.42)	0.88 (0.85 to 0.92)	5.22 (3.55 to 6.90)	0.85 (0.81 to 0.89)	7.80 (5.65 to 9.93)
Head and neck	0.74 (0.59 to 0.94)	10.59 (2.10 to 19.96)	0.65 (0.46 to 0.91)	17.46 (3.68 to 30.98)	0.63 (0.42 to 0.94)	19.83 (1.23 to 36.55)
Myeloid leukaemia	0.80 (0.66 to 0.97)	4.93 (0.68 to 9.70)	0.75 (0.60 to 0.95)	7.08 (1.65 to 12.94)	0.75 (0.60 to 0.94)	7.57 (2.23 to 13.33)
Myeloma	0.84 (0.74 to 0.95)	3.34 (0.90 to 6.26)	0.75 (0.61 to 0.92)	6.76 (1.90 to 12.09)	0.72 (0.57 to 0.92)	8.30 (1.91 to 14.99)
Gastric cardia	0.86 (0.78 to 0.95)	1.95 (0.58 to 3.68)	0.78 (0.66 to 0.91)	4.77 (1.58 to 8.57)	0.73 (0.60 to 0.88)	6.77 (2.55 to 11.63)
Lung	0.89 (0.87 to 0.92)	4.39 (3.16 to 5.63)	0.84 (0.81 to 0.88)	7.26 (5.10 to 9.40)	0.83 (0.76 to 0.91)	8.54 (3.04 to 13.98)
Liver	0.90 (0.83 to 0.98)	3.49 (0.58 to 6.71)	0.84 (0.73 to 0.96)	6.75 (1.44 to 12.31)	0.78 (0.66 to 0.93)	10.27 (3.26 to 17.31)
Endometrial	0.94 (0.90 to 0.99)	1.10 (0.26 to 2.02)	0.90 (0.84 to 0.97)	2.62 (0.76 to 4.60)	0.87 (0.80 to 0.95)	4.54 (1.88 to 7.28)
Colon	0.96 (0.93 to 0.99)	0.70 (0.11 to 1.33)	0.93 (0.87 to 0.99)	1.69 (0.33 to 3.12)	0.90 (0.84 to 0.97)	2.96 (0.92 to 5.05)
Breast	0.97 (0.96 to 0.99)	0.69 (0.32 to 1.07)	0.95 (0.92 to 0.97)	1.62 (0.79 to 2.46)	0.92 (0.88 to 0.96)	3.23 (1.85 to 4.63)
Bladder	0.93 (0.84 to 1.02)	1.91 (-0.54 to 4.52)	0.90 (0.80 to 1.02)	2.98 (-0.24 to 6.33)	0.90 (0.81 to 1.01)	3.11 (0.02 to 6.35)
Rectum	0.96 (0.92 to 1.01)	0.77 (-0.15 to 1.75)	0.95 (0.88 to 1.02)	1.43 (-0.45 to 3.36)	0.96 (0.88 to 1.04)	0.52 (-1.74 to 2.82)
Oesophageal	0.97 (0.89 to 1.05)	0.68 (-0.95 to 2.68)	0.95 (0.82 to 1.09)	1.38 (-2.06 to 5.32)	0.94 (0.79 to 1.12)	1.57 (-3.05 to 6.67)
Prostate	1.00 (0.99 to 1.02)	-0.10 (-0.48 to 0.29)	1.01 (0.98 to 1.04)	-0.21 (-1.10 to 0.71)	1.01 (0.96 to 1.05)	-0.10 (-1.61 to 1.42)
Kidney	1.02 (0.92 to 1.13)	-0.65 (-3.69 to 2.81)	1.03 (0.89 to 1.19)	-1.23 (-6.39 to 4.34)	1.04 (0.88 to 1.24)	-1.91 (-9.20 to 5.63)

CVD, cardiovascular disease; mMET, marginal metabolic equivalent of task; PIF, potential impact fraction; RR, relative risk.

### Subgroup analysis

Pooled estimates from studies that reported results for all-cause, CVD and cancer mortality

The pooled analysis from the 11 studies that reported results for all-cause, CVD and cancer mortality showed weaker associations for all-cause mortality and stronger associations for CVD and cancer mortality (online supplemental eResults 1).

### Sex-stratified results

Sex-stratified results were available for all-cause, CVD and cancer mortality and incidence of total CVD, coronary heart disease,

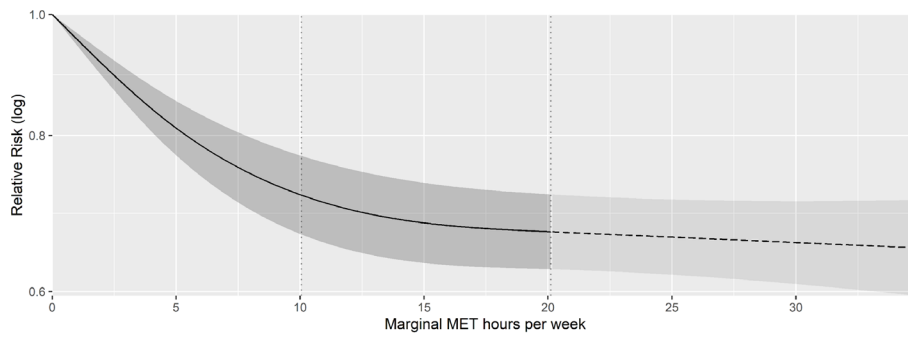
stroke, total cancer, and cancers of the colon and rectum. There was some evidence of stronger associations in women than in men for all-cause and CVD mortality and CVD incidence, but the reverse for cancer mortality and incidence (online supplemental eResults 2).

### Risk of bias

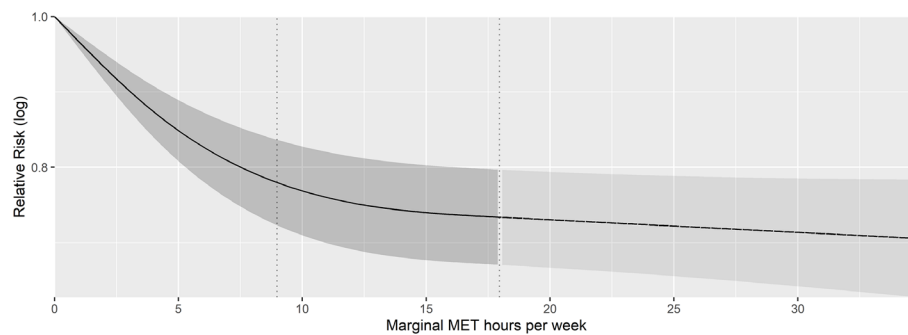
Across the five outcomes with the largest number of separate results (all-cause mortality, and total CVD and cancer mortality and incidence), 83%–93% of the studies used statistical adjustments to control for other morbidities at baseline, often

**Total cardiovascular disease**

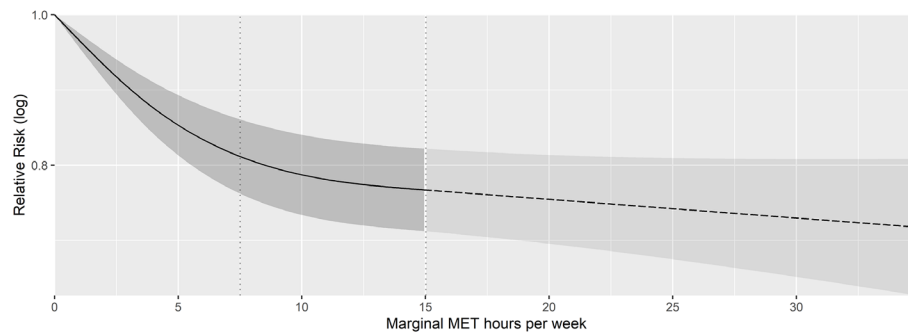
Number of entries: 37  
 Person-years: 28,884,209

**Coronary heart disease**

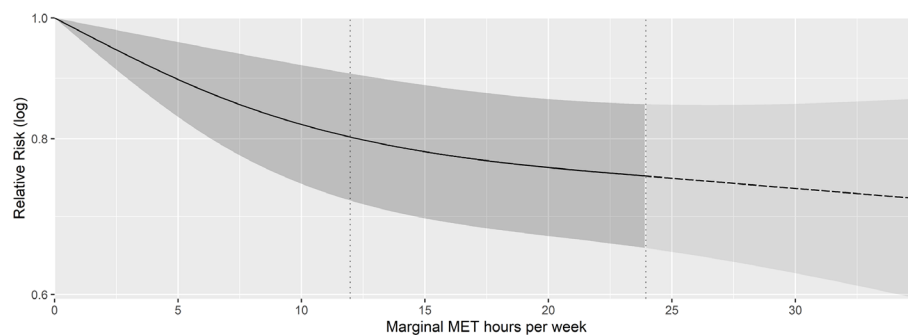
Number of entries: 26  
 Person-years: 29,071,019

**Stroke**

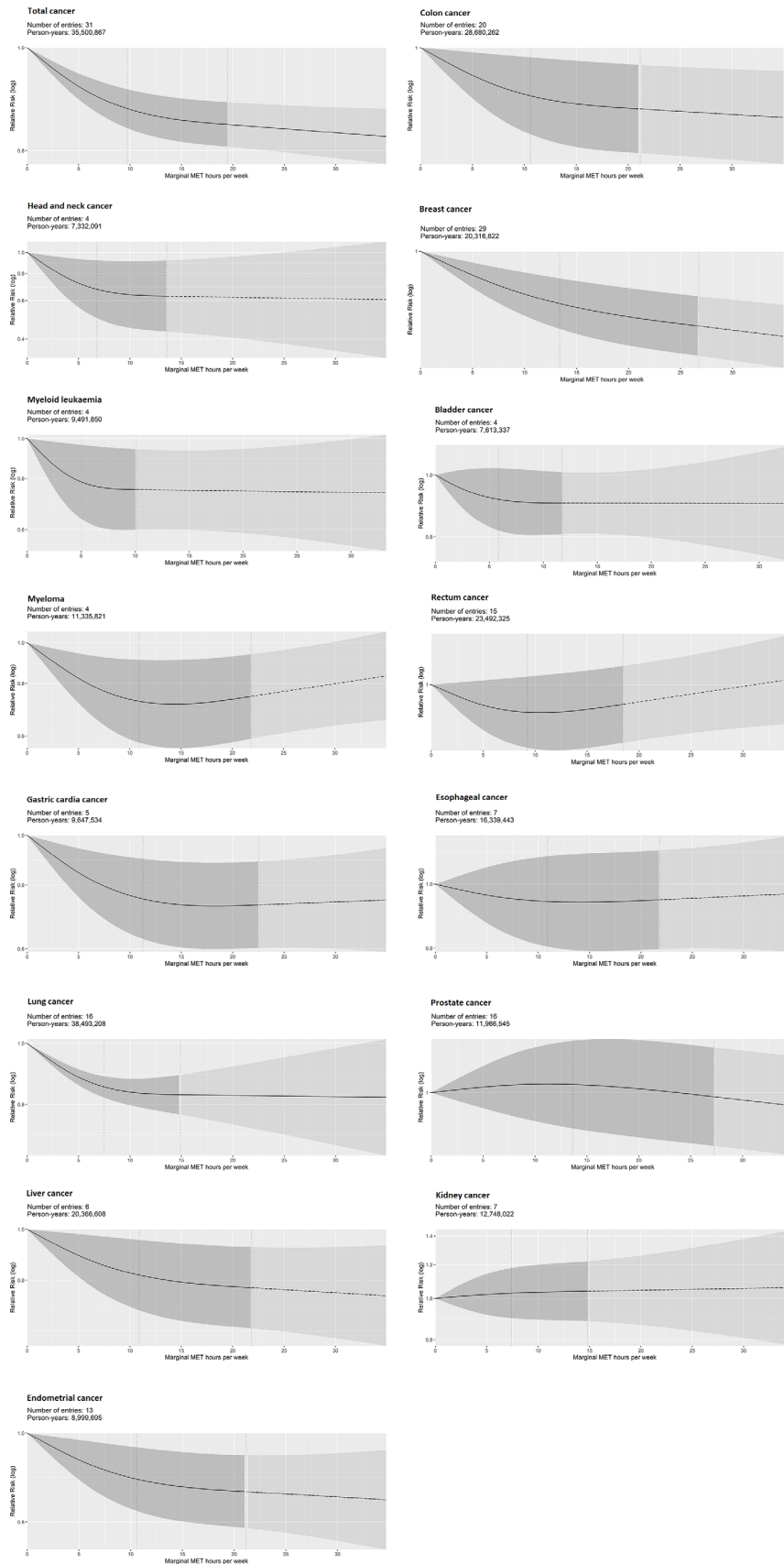
Number of entries: 25  
 Person-years: 24,490,541

**Heart failure**

Number of entries: 11  
 Person-years: 6,088,292



**Figure 3** Dose–response association between non-occupational physical activity and incidence (fatal and non-fatal events combined) of cardiovascular diseases. Vertical dashed lines: cubic spline knots (0th, 37.5th and 75th percentiles of person-years); dashed line beyond the upper knot: constrained to be linear. MET, metabolic equivalent of task.



**Figure 4** Dose–response association between non-occupational physical activity and incidence (fatal and non-fatal events combined) of cancers. Vertical dashed lines: cubic spline knots (0th, 37.5th and 75th percentiles of person-years); dashed line beyond the upper knot: constrained to be linear. MET, metabolic equivalent of task.



combined with exclusion of adults with more serious pre-existing conditions. Studies that predominantly used statistical adjustments tended to report stronger associations for CVD mortality compared with studies that excluded adults with pre-existing conditions at baseline. Between 54% and 59% of the studies did not exclude mortality and disease events occurring within the first few years of follow-up, and those that did tended to report weaker associations for all-cause mortality and CVD mortality and incidence. The median follow-up time was 10 years for each outcome, with no evidence of bias between studies with longer and shorter follow-up time. Data imputation was required for 58%–64% of the studies, but no evidence of bias was found. The most frequently used procedures for exposure harmonisation were measurement unit conversions (42%–49% of studies) and the assumption of standard values for the intensity and duration of PA reported (39%–50%), but no evidence of bias was found. In 75% of the studies, the original exposure assessment did not include occupational PA and no evidence of bias was observed for studies requiring domain separation (online supplemental eResults 3).

### Sensitivity analyses

In studies that did not report the duration or intensity of PA, assuming (where appropriate) shorter session duration (0.5 hours instead of 0.75 hours) and lower intensity (1 mMET lower for moderate and vigorous PA) did not materially alter the dose–response associations for most outcomes, especially analyses which included the largest number of separate results (online supplemental eResults 4). When shorter duration and lower intensity were used, associations were stronger for CVD outcomes, particularly at lower PA volumes. Placing the restricted cubic spline knots at the 42.5th and 85th percentiles resulted in less stable estimations at higher PA volumes, with those specific segments of the dose–response curves being based on less data and with a higher risk of exposure misclassification.

Sensitivity analyses using analytical models that did not include adjustment for adiposity showed stronger associations for all-cause and CVD mortality, and the incidence of total CVD, heart failure, and site-specific cancers of the endometrium, kidney, lung and rectum (online supplemental eResults 4). Notably, the association was significant for rectal cancer.

### DISCUSSION

We present comprehensive dose–response meta-analyses of the associations between non-occupational PA and a wide range of mortality and disease outcomes. Our extensive exposure data harmonisation allowed inclusion of a larger evidence base than previous meta-analyses for 17 of 22 health outcomes investigated. For instance, our meta-analysis for all-cause mortality includes over 160 million person-years and 810 000 deaths. These are 17 and 7 times larger, respectively, than what were included in the previously largest dose–response analysis to date (9.39 million person-years and 117 000 deaths).<sup>2</sup> Our inclusive approach has a number of advantages. First, we were able to estimate dose–response associations for nine site-specific cancers for the first time. Second, inclusion of more data increases confidence in the results beyond previous estimates. Third, it allowed us to include data from a larger number of countries. Fourth, having used consistent methods for several health outcomes allows the best possible comparison of the shape of the dose–response functions across these outcomes. For example, having one set of dose–response results consistently estimated across

several outcomes is particularly useful for health impact modelling, for example, to quantify the probable impacts of changes to population-level PA.

We showed inverse non-linear dose–response associations for all-cause mortality and a range of CVD and cancer outcomes. This suggests that the greatest potential benefits can be achieved through small increases in non-occupational PA for those with an inactive lifestyle, with incrementally smaller additional benefits up to approximately 17.5 mMET-hours/week. Above this level, the evidence base was weaker. Shifting population levels of activity towards achieving the equivalent to 150 min/week of moderate-to-vigorous aerobic PA (8.75 mMET-hours/week) potentially would have prevented 16% of all premature deaths recorded.

Compared with previous studies, we found similar associations for all-cause<sup>2,3</sup> and cancer mortality,<sup>4</sup> and stronger associations and narrower CIs for CVD mortality,<sup>5,6</sup> at the equivalent recommended levels of moderate-to-vigorous aerobic PA. For cancers of the bladder, breast, colon, endometrium, oesophagus, liver and rectum, our results were largely similar to that of a recent pooled analysis.<sup>7</sup> However, we found stronger associations for cancers of the gastric cardia, head and neck, myeloid leukaemia, and myeloma, whereas the association for kidney cancer was non-significant. Contrasting with Moore *et al*'s<sup>8</sup> finding of harmful effects of PA on prostate cancer, our results did not show an association. Comparisons should be interpreted with caution as most previous studies have focused solely on leisure-time PA<sup>2,3,6–8</sup> and meta-analyses by Li *et al*<sup>4</sup> and Wahid *et al*<sup>5</sup> included studies that assessed PA in any domain.

Compared with the results from the GBD,<sup>9</sup> which has assessed total PA rather than non-occupational PA, we found stronger associations for heart disease and stroke at the equivalent minimum recommended moderate-to-vigorous aerobic PA level. Associations reported by the GBD at approximately 130 MET-hours/week for total PA were observed in our study at 17.5 mMET-hours/week for non-occupational PA, a much lower volume even considering that we excluded energy expenditure from the resting metabolic rate and occupational activity. Given the challenges of assessing occupational activity, estimates of total PA from self-report are often implausibly high.<sup>217</sup> Hence, the importance of PA may have been underestimated by the GBD. This, combined with uncertainties around the health benefits of occupational PA,<sup>10,218</sup> means our results may be more relevant from a public health perspective.

It is surprising that the risk difference for all-cause mortality (31% at the equivalent minimum recommended moderate-to-vigorous aerobic PA level) is similar to that for total CVD (29%) and much larger than for total cancer mortality (15%). Equally, it is surprising that the association for total CVD incidence is stronger than that for coronary heart disease or stroke. Weaker associations would be expected for more composite outcomes (eg, all-cause mortality and total CVD incidence) than for the outcomes within them for which a significant association has been established. Potential explanations include detection bias for some disease events, misclassification of causes of death (especially for more specific disease outcomes), differential residual confounding, reverse causality by outcome, and different inclusion criteria by disease outcome, such as the inclusion of different disease groups which may have stronger associations with PA.<sup>219</sup> There may also be study-level confounders, and this is supported by our post-hoc subgroup analysis, which showed that studies reporting all three mortality outcomes found stronger associations for CVD than for all-cause mortality. Taken together, it is probable that the

risk estimates for all-cause mortality are more accurate than for specific disease outcomes.

Our risk of bias and sensitivity analyses showed that the methodological assumptions and decisions made for the pooled analyses did not significantly impact the dose–response associations observed. However, some methodological differences between the original studies seem to alter the magnitude of the pooled associations. Studies that did not exclude people with pre-existing conditions at baseline or mortality or disease events occurring within the first years of follow-up tended to observe stronger associations, as did studies with shorter follow-up, which may in part be indicative of reverse causality.<sup>11 220</sup> For some outcomes, stronger associations were also observed in studies that did not include adjustment for adiposity in their analytical models, which can be interpreted as either being prone to residual confounding or a more inclusive estimation of the total causal effect, if adiposity is considered a mediator between PA and the investigated health outcomes.

A strength of our study was the use of comprehensive exposure data harmonisation methods that enabled the inclusion of a larger evidence base. This also allowed us to study health associations over a wider range of the PA exposure and increased the density of data in the area of the dose–response curves with high non-linearity. Another strength is the use of more sophisticated meta-analytical methods that allow the shape of the dose–response association to vary across the exposure range, rather than linear models of transformed exposure or grouping doses within high versus low PA or multiple exposure intervals. We improved the placement of spline knots compared with our previous work<sup>13</sup> by considering the distribution of person-years instead of non-weighted associations across the PA range, acknowledging the paucity of data at higher volumes of PA.

Our study also has limitations. There are levels of the PA exposure for which health associations are not reported in many of the original studies and hence there is still substantial uncertainty at those levels in the meta-analyses for some outcomes. Many of the included studies relied on self-reported questionnaires without validation or calibration data that could be used in the exposure harmonisation. In the exposure data harmonisation procedures, it was also sometimes necessary to make assumptions about parameters of PA, such as intensity and duration, where these were not explicitly reported. Nonetheless, our sensitivity analyses demonstrated the robustness of our results to the assumptions made. Measurement error is likely to lead to an underestimation of the true association between PA and the various outcomes, as demonstrated by the stronger associations observed in studies using device-based measures of PA.<sup>221</sup> Regression dilution bias, particularly in studies with longer follow-up times, might also have affected the associations observed,<sup>220</sup> which can be mitigated by repeated PA measures over time. Misclassification of some outcomes will have occurred in original studies as ascertainment of outcomes may not be similarly accurate across all outcomes and studies. Residual confounding and reverse causation could remain. To mitigate confounding, the most comprehensively adjusted risk estimates were used in this meta-analysis. However, the level of covariate adjustment and the degree to which these covariates effectively control for confounding were not consistent across all studies. We excluded studies with less than 3 years of follow-up to mitigate reverse causation.<sup>220</sup> Although the bias from reverse causation diminishes with longer periods of follow-up, changes in PA level over time could be possible.<sup>11 222</sup> Our estimates of population impact are based on the assumptions

that the dose–response relationships are causal and that the prevalence of PA in our cohorts is representative of the wider population. The time lag between searches and publication of our results is longer than typical due to the scale of this review. We did not use validated tools to assess risk of bias or certainty of evidence. Nonetheless, we assessed six critical potential sources of bias for observational studies in PA and health outcomes and quantified their impacts on our results. Aspects included in other tools but not quantified by us, such as methods to measure exposure and outcome and attempt to control for established confounding factors (eg, sex and age), were not materially different across the included studies and hence it was not possible to assess their impact. Our analyses also cover aspects that are important for judging the confidence in the evidence base, such as the dose–response gradient, precision of the effect estimates, risk of bias assessment and subgroup analysis to investigate the effect of study-level confounders.

Our findings support the current PA recommendations of 150–300 min/week of moderate aerobic PA (or 75–150 min/week of vigorous aerobic PA, or an equivalent combination of moderate and vigorous activities),<sup>21</sup> in that this exposure level generally seems to equate to maximum or near-to-maximal benefits. However, the dose–response associations also demonstrate that appreciable health benefits can be gained from 75 min/week or less of moderate activity (ie, half the recommended minimum level). Thus, our findings support the recent change in public health messaging to ‘doing some PA is better than doing none’, and suggest that the emphasis on threshold-based recommendations could be further reduced.

It should be noted that our exposure estimates are derived from a variety of self-reported questionnaires that capture mostly moderate and vigorous activities. These exposure estimates differ from those derived using device-based measures, which also record light-intensity and intermittent activities that are more difficult to recall.<sup>221 223 224</sup> Self-report and device-based measures are therefore complementary but not interchangeable,<sup>224</sup> an important consideration when formulating public health messages.

Future research should investigate the reasons for the apparent inconsistencies in dose–response associations between composite and individual disease endpoints. Although our risk of bias and sensitivity analyses showed robustness to the approaches we took during data handling and dose harmonisation, future studies could quantify methodological uncertainties (eg, inaccuracies in exposure assessment) and propagate them in the aetiological analyses to provide more realistic uncertainty ranges for the dose–response associations. The evidence base was weaker for very high volumes of activity and further research is required to ascertain the shape of associations more reliably at the higher end of the PA continuum.

## CONCLUSION

We found evidence of dose-dependent associations between increasing non-occupational PA and a wide range of mortality, CVD and cancer outcomes. The strongest associations were observed for all-cause and CVD mortality, with weaker associations for the incidence of cancer, including variation by site. Appreciable population health benefits might be gained from increasing PA levels of people who are inactive to just half the current health recommendations, with further

benefits for all reaching at least the recommended level and smaller additional benefits beyond that.

### What is already known

- ⇒ Higher levels of physical activity are associated with lower rates of premature death and chronic disease outcomes.
- ⇒ The shape of the dose–response association has been more difficult to determine and has not been established for a range of chronic diseases.
- ⇒ Accurate estimation of the dose–response association between physical activity and disease outcomes is needed to assess the disease burden of physical inactivity and the potential impact of changes to population levels of physical activity.

### What are the findings?

- ⇒ Our findings suggest an appreciably lower risk of mortality, cardiovascular diseases and cancers from the equivalent of 75 min/week or less of moderate-intensity aerobic physical activity (ie, half the recommended minimum levels).
- ⇒ Our results include the first dose–response meta-analysis of nine site-specific cancers: bladder, esophageal, gastric cardia, head and neck, kidney, liver, lung, myeloid leukaemia and myeloma.
- ⇒ One in 10 premature deaths could have been prevented if everyone achieved even half the recommended level of physical activity.

### Author affiliations

<sup>1</sup>MRC Epidemiology Unit, University of Cambridge School of Clinical Medicine, Cambridge, UK

<sup>2</sup>Centre for Public Health, Queen's University Belfast, Belfast, UK

<sup>3</sup>Singapore Institute for Clinical Sciences, Agency for Science, Technology and Research, Singapore

<sup>4</sup>University of Cambridge School of Clinical Medicine, Cambridge, UK

<sup>5</sup>Department of Medical Epidemiology and Biostatistics, Karolinska Institutet, Stockholm, Sweden

<sup>6</sup>Diabetes Research Centre, University of Leicester, Leicester, UK

<sup>7</sup>Cambridge University Hospitals NHS Foundation Trust, Cambridge, UK

<sup>8</sup>Physical Activity for Health Research Centre, University of Edinburgh Institute for Sport, Physical Education and Health Sciences, Edinburgh, UK

<sup>9</sup>Sydney School of Public Health, Prevention Research Collaboration, The University of Sydney, Sydney, New South Wales, Australia

<sup>10</sup>Charles Perkins Centre, The University of Sydney, Sydney, New South Wales, Australia

<sup>11</sup>Economic and Social Research Institute, Dublin, Ireland

<sup>12</sup>Center for Epidemiological Research in Nutrition and Health, University of Sao Paulo, Sao Paulo, Brazil

<sup>13</sup>Department of Behavioural Science and Health, University College London, London, UK

**Correction notice** This article has been corrected since it published Online First. The article type has been changed to systematic review.

**Twitter** Leandro Garcia @LGComplexity, Tessa Strain @tessastraining, Paul Kelly @narrowboat\_paul and Soren Brage @SorenBrage

**Acknowledgements** We thank the authors of original articles who replied to our request for additional information about their analyses: Professor Alejandro Arrieta, Dr Michael Cook, Professor Ulf Ekelund, Professor Edward Giovannucci, Professor Reza Malekzadeh, Dr Jessica Morris, Dr Neil Murphy, Dr Mahdi Nalini, Dr Nicole Niehoff, Dr Tom Nilsen, Dr Annlia Paganini-Hill, Dr Song-Yi Park, Professor Louise Russell and Professor Wei Zheng. We also thank the IT team of the MRC Epidemiology Unit (University of Cambridge) for setting up the server to host the online results.

**Contributors** Conception and design: LG, MP, AM, TS, JW, SB. Data acquisition: LG, MP, AM, TS, SA, PCD, RG, PK, YL, EM, SM, THdS, ADS, KW. Statistical analysis: LG, MP, AA, AC, JW, SB. Software: AA. Interpretation of data: LG, MP, AM, TS, PCD, RG, PK, YL,

EM, THdS, ADS, KW, JW, SB. Drafting of the manuscript: LG, MP, AM, TS, SA, JW, SB. Critical revision of the manuscript: all authors. All authors approved the submitted version and agreed to be accountable for all aspects of the work.

**Funding** LG, AA and JW were supported by METAHIT, an MRC Methodology Panel project (MR/P02663X/1). AA, MP and JW have received funding from the European Research Council (ERC) under the Horizon 2020 Research and Innovation Programme (grant agreement 817754) (this material reflects only the authors' views and the Commission is not liable for any use that may be made of the information contained therein). LG, AA and JW were supported by the Centre for Diet and Activity Research (CEDAR), a UKCRC Public Health Research Centre of Excellence funded by the British Heart Foundation, Cancer Research UK, Economic and Social Research Council, Medical Research Council, the National Institute for Health Research (NIHR) and the Wellcome Trust (MR/K023187/1). PCD was supported by a National Health and Medical Research Council of Australia Research Fellowship (no: 1142685). RG was supported by a Gates Cambridge Scholarship. MP and SB were supported by the NIHR Biomedical Research Centre, Cambridge (IS-BRC-1215-20014). AM was supported by the National Science Scholarship from Singapore, A\*STAR. THdS was supported by the São Paulo Research Foundation (2012/08565-4 and 2013/25624-7) and the National Council for Scientific and Technological Development (200358/2014-6 and 402648/2015-3). MP, TS, PCD, KW and SB were supported by UK Medical Research Council (MC\_UU\_12015/3, MC\_UU\_00006/4).

**Competing interests** None declared.

**Patient consent for publication** Not required.

**Provenance and peer review** Not commissioned; externally peer reviewed.

**Supplemental material** This content has been supplied by the author(s). It has not been vetted by BMJ Publishing Group Limited (BMJ) and may not have been peer-reviewed. Any opinions or recommendations discussed are solely those of the author(s) and are not endorsed by BMJ. BMJ disclaims all liability and responsibility arising from any reliance placed on the content. Where the content includes any translated material, BMJ does not warrant the accuracy and reliability of the translations (including but not limited to local regulations, clinical guidelines, terminology, drug names and drug dosages), and is not responsible for any error and/or omissions arising from translation and adaptation or otherwise.

**Open access** This is an open access article distributed in accordance with the Creative Commons Attribution 4.0 Unported (CC BY 4.0) license, which permits others to copy, redistribute, remix, transform and build upon this work for any purpose, provided the original work is properly cited, a link to the licence is given, and indication of whether changes were made. See: <https://creativecommons.org/licenses/by/4.0/>.

### ORCID iDs

Leandro Garcia <http://orcid.org/0000-0001-5947-2617>

Matthew Pearce <http://orcid.org/0000-0003-3718-7502>

Tessa Strain <http://orcid.org/0000-0002-7086-1047>

Paul Kelly <http://orcid.org/0000-0003-1946-9848>

Soren Brage <http://orcid.org/0000-0002-1265-7355>

### REFERENCES

- 1 Global Burden of Disease Cancer Collaboration, Fitzmaurice C, Allen C, *et al*. Global, regional, and National cancer incidence, mortality, years of life lost, years lived with disability, and disability-adjusted life-years for 32 cancer groups, 1990 to 2015: a systematic analysis for the global burden of disease study. *JAMA Oncol* 2017;3:524–48.
- 2 Arem H, Moore SC, Patel A, *et al*. Leisure time physical activity and mortality: a detailed pooled analysis of the dose-response relationship. *JAMA Intern Med* 2015;175:959–67.
- 3 Moore SC, Patel AV, Matthews CE, *et al*. Leisure time physical activity of moderate to vigorous intensity and mortality: a large pooled cohort analysis. *PLoS Med* 2012;9:e1001335.
- 4 Li T, Wei S, Shi Y, *et al*. The dose–response effect of physical activity on cancer mortality: findings from 71 prospective cohort studies. *Br J Sports Med* 2016;50:339–45.
- 5 Wahid A, Manek N, Nichols M, *et al*. Quantifying the association between physical activity and cardiovascular disease and diabetes: a systematic review and Meta-Analysis. *J Am Heart Assoc* 2016;5:e002495.
- 6 Cheng W, Zhang Z, Cheng W, *et al*. Associations of leisure-time physical activity with cardiovascular mortality: a systematic review and meta-analysis of 44 prospective cohort studies. *Eur J Prev Cardiol* 2018;25:1864–72.
- 7 Matthews CE, Moore SC, Arem H, *et al*. Amount and intensity of leisure-time physical activity and lower cancer risk. *JCO* 2020;38:686–97.
- 8 Moore SC, Lee I-M, Weiderpass E, *et al*. Association of leisure-time physical activity with risk of 26 types of cancer in 1.44 million adults. *JAMA Intern Med* 2016;176:816–25.



- 9 Kyu HH, Bachman VF, Alexander LT, *et al.* Physical activity and risk of breast cancer, colon cancer, diabetes, ischemic heart disease, and ischemic stroke events: systematic review and dose-response meta-analysis for the global burden of disease study 2013. *BMJ* 2016;354:i3857.
- 10 Pearce M, Strain T, Wijndaele K, *et al.* Is occupational physical activity associated with mortality in UK Biobank? *Int J Behav Nutr Phys Act* 2021;18:102.
- 11 Lee DH, Rezende LFM, Ferrari G, *et al.* Physical activity and all-cause and cause-specific mortality: assessing the impact of reverse causation and measurement error in two large prospective cohorts. *Eur J Epidemiol* 2021;36:275–85.
- 12 2018 Physical Activity Guidelines Advisory Committee. *2018 physical activity guidelines Advisory Committee scientific report*. U.S. Department of Health and Human Services, 2018.
- 13 Smith AD, Crippa A, Woodcock J, *et al.* Physical activity and incident type 2 diabetes mellitus: a systematic review and dose-response meta-analysis of prospective cohort studies. *Diabetologia* 2016;59:2527–45.
- 14 Ainsworth BE, Haskell WL, Herrmann SD, *et al.* 2011 compendium of physical activities: a second update of codes and Met values. *Med Sci Sports Exerc* 2011;43:1575–81.
- 15 Hamling J, Lee P, Weitkunat R, *et al.* Facilitating meta-analyses by deriving relative effect and precision estimates for alternative comparisons from a set of estimates presented by exposure level or disease category. *Stat Med* 2008;27:954–70.
- 16 Greenland S, Longnecker MP. Methods for trend estimation from summarized dose-response data, with applications to meta-analysis. *Am J Epidemiol* 1992;135:1301–9.
- 17 Orsini N, Li R, Wolk A, *et al.* Meta-Analysis for linear and nonlinear dose-response relations: examples, an evaluation of approximations, and software. *Am J Epidemiol* 2012;175:66–73.
- 18 Gasparrini A, Armstrong B, Kenward MG. Multivariate meta-analysis for non-linear and other multi-parameter associations. *Stat Med* 2012;31:3821–39.
- 19 Crippa A, Orsini N. Multivariate Dose-Response Meta-Analysis: The **dosresmeta** R Package. *J Stat Softw* 2016;72:1–15.
- 20 Zapata-Diomedí B, Barendregt JJ, Veerman JL. Population attributable fraction: names, types and issues with incorrect interpretation of relative risks. *Br J Sports Med* 2018;52:212–3.
- 21 World Health Organization. *Who guidelines on physical activity and sedentary behaviour*. World Health Organization, 2020.
- 22 Reddigan JL, Ardern CI, Riddell MC, *et al.* Relation of physical activity to cardiovascular disease mortality and the influence of cardiometabolic risk factors. *Am J Cardiol* 2011;108:1426–31.
- 23 Ekelund U, Ward HA, Norat T, *et al.* Physical activity and all-cause mortality across levels of overall and abdominal adiposity in European men and women: the European prospective investigation into cancer and nutrition study (EPIC). *Am J Clin Nutr* 2015;101:613–21.
- 24 Kabat GC, Matthews CE, Kamensky V, *et al.* Adherence to cancer prevention guidelines and cancer incidence, cancer mortality, and total mortality: a prospective cohort study. *Am J Clin Nutr* 2015;101:558–69.
- 25 Carlsson S, Andersson T, Lichtenstein P, *et al.* Physical activity and mortality: is the association explained by genetic selection? *Am J Epidemiol* 2007;166:255–9.
- 26 Hofmann JN, Moore SC, Lim U, *et al.* Body mass index and physical activity at different ages and risk of multiple myeloma in the NIH-AARP diet and health study. *Am J Epidemiol* 2013;177:776–86.
- 27 Lee IM, Paffenbarger RS. Associations of light, moderate, and vigorous intensity physical activity with longevity. The Harvard alumni health study. *Am J Epidemiol* 2000;151:293–9.
- 28 Leitzmann MF, Koebnick C, Abnet CC, *et al.* Prospective study of physical activity and lung cancer by histologic type in current, former, and never smokers. *Am J Epidemiol* 2009;169:542–53.
- 29 Matthews CE, Cohen SS, Fowke JH, *et al.* Physical activity, sedentary behavior, and cause-specific mortality in black and white adults in the southern community cohort study. *Am J Epidemiol* 2014;180:394–405.
- 30 Moore SC, Chow W-H, Schatzkin A, *et al.* Physical activity during adulthood and adolescence in relation to renal cell cancer. *Am J Epidemiol* 2008;168:149–57.
- 31 Patel AV, Bernstein L, Deka A, *et al.* Leisure time spent sitting in relation to total mortality in a prospective cohort of US adults. *Am J Epidemiol* 2010;172:419–29.
- 32 Setiawan VW, Stram DO, Nomura AMY, *et al.* Risk factors for renal cell cancer: the Multiethnic cohort. *Am J Epidemiol* 2007;166:932–40.
- 33 Stamatakis E, Hamer M, Lawlor DA. Physical activity, mortality, and cardiovascular disease: is domestic physical activity beneficial? the Scottish health survey -- 1995, 1998, and 2003. *Am J Epidemiol* 2009;169:1191–200.
- 34 de Souto Barreto P, Cesari M, Andrieu S, *et al.* Physical activity and incident chronic diseases: a longitudinal observational study in 16 European countries. *Am J Prev Med* 2017;52:373–8.
- 35 Hamer M, de Oliveira C, Demakakos P. Non-exercise physical activity and survival: English longitudinal study of ageing. *Am J Prev Med* 2014;47:452–60.
- 36 Ueshima K, Ishikawa-Takata K, Yorifuji T, *et al.* Physical activity and mortality risk in the Japanese elderly. *Am J Prev Med* 2010;38:410–8.
- 37 Albanes D, Blair A, Taylor PR. Physical activity and risk of cancer in the NHANES I population. *Am J Public Health* 1989;79:744–50.
- 38 Rockhill B, Willett WC, Manson JE, *et al.* Physical activity and mortality: a prospective study among women. *Am J Public Health* 2001;91:578–83.
- 39 Arrieta A, Russell LB. Effects of leisure and non-leisure physical activity on mortality in U.S. adults over two decades. *Ann Epidemiol* 2008;18:889–95.
- 40 Inoue M, Iso H, Yamamoto S, *et al.* Daily total physical activity level and premature death in men and women: results from a large-scale population-based cohort study in Japan (JPHC study). *Ann Epidemiol* 2008;18:522–30.
- 41 Prineas RJ, Folsom AR, Kaye SA. Central adiposity and increased risk of coronary artery disease mortality in older women. *Ann Epidemiol* 1993;3:35–41.
- 42 Cho J, Lee I, Park S, *et al.* Physical activity and all-cause mortality in Korean older adults. *Ann Hum Biol* 2018;45:337–45.
- 43 Walter RB, Buckley SA, White E. Regular recreational physical activity and risk of hematologic malignancies: results from the prospective vitamins and lifestyle (vital) study. *Ann Oncol* 2013;24:1370–7.
- 44 Bardia A, Hartmann LC, Vachon CM, *et al.* Recreational physical activity and risk of postmenopausal breast cancer based on hormone receptor status. *Arch Intern Med* 2006;166:2478–83.
- 45 Rockhill B, Willett WC, Hunter DJ, *et al.* A prospective study of recreational physical activity and breast cancer risk. *Arch Intern Med* 1999;159:2290–6.
- 46 Schooling CM, Lam TH, Li ZB, *et al.* Obesity, physical activity, and mortality in a prospective Chinese elderly cohort. *Arch Intern Med* 2006;166:1498–504.
- 47 Suzuki K, Japan Collaborative Cohort Study for Evaluation of Cancer. Health conditions and mortality in the Japan collaborative cohort study for evaluation of cancer (JACC). *Asian Pac J Cancer Prev* 2007;8 Suppl:25–34.
- 48 Hu G, Jousilahti P, Borodulin K, *et al.* Occupational, commuting and leisure-time physical activity in relation to coronary heart disease among middle-aged Finnish men and women. *Atherosclerosis* 2007;194:490–7.
- 49 Oyeyemi SO, Braaten T, Licaj I, *et al.* Physical activity patterns and the risk of colorectal cancer in the Norwegian women and cancer study: a population-based prospective study. *BMC Cancer* 2018;18:1216.
- 50 Jee Y, Kim Y, Jee SH, *et al.* Exercise and cancer mortality in Korean men and women: a prospective cohort study. *BMC Public Health* 2018;18:761.
- 51 Nunez C, Nair-Shalliker V, Egger S, *et al.* Physical activity, obesity and sedentary behaviour and the risks of colon and rectal cancers in the 45 and up study. *BMC Public Health* 2018;18:325.
- 52 Nalini M, Oranuba E, Poustchi H, *et al.* Causes of premature death and their associated risk factors in the Golestan cohort study, Iran. *BMJ Open* 2018;8:e021479.
- 53 Leitzmann MF, Moore SC, Peters TM, *et al.* Prospective study of physical activity and risk of postmenopausal breast cancer. *Breast Cancer Res* 2008;10:R92.
- 54 Ma H, Xu X, Clague J, *et al.* Recreational physical activity and risk of triple negative breast cancer in the California teachers study. *Breast Cancer Res* 2016;18:62.
- 55 Silvera SAN, Jain M, Howe GR, *et al.* Energy balance and breast cancer risk: a prospective cohort study. *Breast Cancer Res Treat* 2006;97:97–106.
- 56 Dieli-Conwright CM, Ma H, Lacey JV, *et al.* Long-Term and baseline recreational physical activity and risk of endometrial cancer: the California teachers study. *Br J Cancer* 2013;109:761–8.
- 57 Morris JS, Bradbury KE, Cross AJ, *et al.* Physical activity, sedentary behaviour and colorectal cancer risk in the UK Biobank. *Br J Cancer* 2018;118:920–9.
- 58 Orsini N, Bellocco R, Bottai M, *et al.* A prospective study of lifetime physical activity and prostate cancer incidence and mortality. *Br J Cancer* 2009;101:1932–8.
- 59 Orsini N, Mantzoros CS, Wolk A. Association of physical activity with cancer incidence, mortality, and survival: a population-based study of men. *Br J Cancer* 2008;98:1864–9.
- 60 Pronk A, Ji B-T, Shu X-O, *et al.* Physical activity and breast cancer risk in Chinese women. *Br J Cancer* 2011;105:1443–50.
- 61 Thune I, Lund E. Physical activity and risk of colorectal cancer in men and women. *Br J Cancer* 1996;73:1134–40.
- 62 Brown WJ, McLaughlin D, Leung J, *et al.* Physical activity and all-cause mortality in older women and men. *Br J Sports Med* 2012;46:664–8.
- 63 Lee D-C, Sui X, Ortega FB, *et al.* Comparisons of leisure-time physical activity and cardiorespiratory fitness as predictors of all-cause mortality in men and women. *Br J Sports Med* 2011;45:504–10.
- 64 Zhao G, Li C, Ford ES, *et al.* Leisure-time aerobic physical activity, muscle-strengthening activity and mortality risks among US adults: the NHANES linked mortality study. *Br J Sports Med* 2014;48:244–9.
- 65 Moore SC, Peters TM, Ahn J, *et al.* Age-Specific physical activity and prostate cancer risk among white men and black men. *Cancer* 2009;115:5060–70.
- 66 Tripathi A, Folsom AR, Anderson KE, *et al.* Risk factors for urinary bladder carcinoma in postmenopausal women. The Iowa women's health study. *Cancer* 2002;95:2316–23.
- 67 Bostick RM, Potter JD, Kushi LH, *et al.* Sugar, meat, and fat intake, and non-dietary risk factors for colon cancer incidence in Iowa women (United States). *Cancer Causes Control* 1994;5:38–52.
- 68 Colbert LH, Lacey Jr. JV, Schairer C, *et al.* Physical activity and risk of endometrial cancer in a prospective cohort study (United States). *Cancer Causes Control* 2003;14:559–67.

- 69 Conroy MB, Sattelmair JR, Cook NR, *et al.* Physical activity, adiposity, and risk of endometrial cancer. *Cancer Causes Control* 2009;20:1107–15.
- 70 Giovannucci E, Colditz GA, Stampfer MJ, *et al.* Physical activity, obesity, and risk of colorectal adenoma in women (United States). *Cancer Causes Control* 1996;7:253–63.
- 71 Howard RA, Freedman DM, Park Y, *et al.* Physical activity, sedentary behavior, and the risk of colon and rectal cancer in the NIH-AARP diet and health study. *Cancer Causes Control* 2008;19:939–53.
- 72 Howard RA, Leitzmann MF, Linet MS, *et al.* Physical activity and breast cancer risk among pre- and postmenopausal women in the U.S. radiologic technologists cohort. *Cancer Causes Control* 2009;20:323–33.
- 73 Huerta JM, Navarro C, Chirlaque M-D, *et al.* Prospective study of physical activity and risk of primary adenocarcinomas of the esophagus and stomach in the EPIC (European prospective investigation into cancer and nutrition) cohort. *Cancer Causes Control* 2010;21:657–69.
- 74 Lee IM, Manson JE, Ajani U, *et al.* Physical activity and risk of colon cancer: the physicians' health study (United States). *Cancer Causes Control* 1997;8:568–74.
- 75 Lee IM, Rexrode KM, Cook NR, *et al.* Physical activity and breast cancer risk: the women's health study (United States). *Cancer Causes Control* 2001;12:137–45.
- 76 Leitzmann MF, Koebernick C, Freedman ND, *et al.* Physical activity and head and neck cancer risk. *Cancer Causes Control* 2008;19:1391–9.
- 77 Park S-Y, Haiman CA, Cheng I, *et al.* Racial/Ethnic differences in lifestyle-related factors and prostate cancer risk: the Multiethnic cohort study. *Cancer Causes Control* 2015;26:1507–15.
- 78 Patel AV, Carter BD, Stevens VL, *et al.* The relationship between physical activity, obesity, and lung cancer risk by smoking status in a large prospective cohort of US adults. *Cancer Causes Control* 2017;28:1357–68.
- 79 Thune I, Lund E. Physical activity and the risk of prostate and testicular cancer: a cohort study of 53,000 Norwegian men. *Cancer Causes Control* 1994;5:549–56.
- 80 Barberio AM, Friedenreich CM, Lynch BM, *et al.* Physical activity and cancer incidence in Alberta's tomorrow project: results from a prospective cohort of 26,538 participants. *Cancer Epidemiol Biomarkers Prev* 2018;27:945–54.
- 81 Birmann BM, Giovannucci E, Rosner B, *et al.* Body mass index, physical activity, and risk of multiple myeloma. *Cancer Epidemiol Biomarkers Prev* 2007;16:1474–8.
- 82 Chang S-C, Ziegler RG, Dunn B, *et al.* Association of energy intake and energy balance with postmenopausal breast cancer in the prostate, lung, colorectal, and ovarian cancer screening trial. *Cancer Epidemiol Biomarkers Prev* 2006;15:334–41.
- 83 Chao A, Connell CJ, Jacobs EJ, *et al.* Amount, type, and timing of recreational physical activity in relation to colon and rectal cancer in older adults: the cancer prevention study II nutrition cohort. *Cancer Epidemiol Biomarkers Prev* 2004;13:2187–95.
- 84 Friberg E, Mantzoros CS, Wolk A. Physical activity and risk of endometrial cancer: a population-based prospective cohort study. *Cancer Epidemiol Biomarkers Prev* 2006;15:2136–40.
- 85 Hildebrand JS, Gapstur SM, Campbell PT, *et al.* Recreational physical activity and leisure-time sitting in relation to postmenopausal breast cancer risk. *Cancer Epidemiol Biomarkers Prev* 2013;22:1906–12.
- 86 Kabat GC, Wu JW, Moore SC, *et al.* Lifestyle and dietary factors in relation to risk of chronic myeloid leukemia in the NIH-AARP diet and health study. *Cancer Epidemiol Biomarkers Prev* 2013;22:848–54.
- 87 Koebernick C, Michaud D, Moore SC, *et al.* Body mass index, physical activity, and bladder cancer in a large prospective study. *Cancer Epidemiol Biomarkers Prev* 2008;17:1214–21.
- 88 Mai PL, Sullivan-Halley J, Ursin G, *et al.* Physical activity and colon cancer risk among women in the California teachers study. *Cancer Epidemiol Biomarkers Prev* 2007;16:517–25.
- 89 Margolis KL, Mucci L, Braaten T, *et al.* Physical Activity in Different Periods of Life and the Risk of Breast Cancer: The Norwegian-Swedish Women's Lifestyle and Health Cohort Study. *Cancer Epidemiol Biomarkers Prev* 2005;14:27–32.
- 90 Niehoff NM, Nichols HB, Zhao S, *et al.* Adult physical activity and breast cancer risk in women with a family history of breast cancer. *Cancer Epidemiol Biomarkers Prev* 2019;28:51–8.
- 91 Nilsen TIL, Romundstad PR, Petersen H, *et al.* Recreational physical activity and cancer risk in subsites of the colon (the Nord-Trøndelag health study). *Cancer Epidemiol Biomarkers Prev* 2008;17:183–8.
- 92 Patel AV, Rodriguez C, Jacobs EJ, *et al.* Recreational physical activity and risk of prostate cancer in a large cohort of U.S. men. *S men Cancer Epidemiol Biomarkers Prev* 2005;14:275–9.
- 93 Peters TM, Schatzkin A, Gierach GL, *et al.* Physical activity and postmenopausal breast cancer risk in the NIH-AARP diet and health study. *Cancer Epidemiol Biomarkers Prev* 2009;18:289–96.
- 94 Rosenberg L, Palmer JR, Bethea TN, *et al.* A prospective study of physical activity and breast cancer incidence in African-American women. *Cancer Epidemiol Biomarkers Prev* 2014;23:2522–31.
- 95 Sinner P, Folsom AR, Harnack L, *et al.* The association of physical activity with lung cancer incidence in a cohort of older women: the Iowa women's health study. *Cancer Epidemiol Biomarkers Prev* 2006;15:2359–63.
- 96 Sjødahl K, Jia C, Vatten L, *et al.* Body mass and physical activity and risk of gastric cancer in a population-based cohort study in Norway. *Cancer Epidemiol Biomarkers Prev* 2008;17:135–40.
- 97 Tehard B, Friedenreich CM, Oppert J-M, *et al.* Effect of physical activity on women at increased risk of breast cancer: results from the E3N cohort study. *Cancer Epidemiol Biomarkers Prev* 2006;15:57–64.
- 98 Arem H, Loffield E, Saint-Maurice PF, *et al.* Physical activity across the lifespan and liver cancer incidence in the NIH-AARP diet and health study cohort. *Cancer Med* 2018;7:1450–7.
- 99 Morikawa T, Kuchiba A, Lochhead P, *et al.* Prospective analysis of body mass index, physical activity, and colorectal cancer risk associated with  $\beta$ -catenin (CTNNB1) status. *Cancer Res* 2013;73:1600–10.
- 100 Paganini-Hill A. Lifestyle practices and cardiovascular disease mortality in the elderly: the leisure world cohort study. *Cardiol Res Pract* 2011;2011:1–7.
- 101 Armstrong MEG, Green J, Reeves GK, *et al.* Frequent physical activity may not reduce vascular disease risk as much as moderate activity: large prospective study of women in the United Kingdom. *Circulation* 2015;131:721–9.
- 102 Chiuve SE, Rexrode KM, Spiegelman D, *et al.* Primary prevention of stroke by healthy lifestyle. *Circulation* 2008;118:947–54.
- 103 Chomistek AK, Henschel B, Eliassen AH, *et al.* Frequency, type, and volume of leisure-time physical activity and risk of coronary heart disease in young women. *Circulation* 2016;134:290–9.
- 104 Fraser GE, Strahan TM, Sabaté J, *et al.* Effects of traditional coronary risk factors on rates of incident coronary events in a low-risk population. The Adventist health study. *Circulation* 1992;86:406–13.
- 105 Hu G, Jousilahti P, Antikainen R, *et al.* Joint effects of physical activity, body mass index, waist circumference, and waist-to-hip ratio on the risk of heart failure. *Circulation* 2010;121:237–44.
- 106 Kenchaiah S, Sesso HD, Gaziano JM. Body mass index and vigorous physical activity and the risk of heart failure among men. *Circulation* 2009;119:44–52.
- 107 Sesso HD, Paffenbarger RS, Lee IM. Physical activity and coronary heart disease in men: the Harvard alumni health study. *Circulation* 2000;102:975–80.
- 108 Andersen K, Mariosa D, Adami H-O, *et al.* Dose-Response relationship of total and leisure time physical activity to risk of heart failure: a prospective cohort study. *Circ Heart Fail* 2014;7:701–8.
- 109 Rahman I, Bellavia A, Wolk A. Relationship between physical activity and heart failure risk in women. *Circ Heart Fail* 2014;7:877–81.
- 110 Young DR, Reynolds K, Sidel M, *et al.* Effects of physical activity and sedentary time on the risk of heart failure. *Circ Heart Fail* 2014;7:21–7.
- 111 Borch KB, Braaten T, Lund E, *et al.* Physical activity and mortality among Norwegian women – the Norwegian Women and Cancer Study. *Clin Epidemiol* 2011;3:229–35.
- 112 Murphy N, Ward HA, Jenab M, *et al.* Heterogeneity of Colorectal Cancer Risk Factors by Anatomical Subsite in 10 European Countries: A Multinational Cohort Study. *Clin Gastroenterol Hepatol* 2019;17:1323–31.
- 113 Villeneuve PJ, Morrison HI, Craig CL, *et al.* Physical activity, physical fitness, and risk of dying. *Epidemiology* 1998;9:626–31.
- 114 Hu G, Tuomilehto J, Silventoinen K, *et al.* Joint effects of physical activity, body mass index, waist circumference and waist-to-hip ratio with the risk of cardiovascular disease among middle-aged Finnish men and women. *Eur Heart J* 2004;25:2212–9.
- 115 Pedersen JO, Heitmann BL, Schnohr P, *et al.* The combined influence of leisure-time physical activity and Weekly alcohol intake on fatal ischaemic heart disease and all-cause mortality. *Eur Heart J* 2008;29:204–12.
- 116 Larsson SC, Rutegård J, Bergkvist L, *et al.* Physical activity, obesity, and risk of colon and rectal cancer in a cohort of Swedish men. *Eur J Cancer* 2006;42:2590–7.
- 117 Eaglehouse YL, Koh W-P, Wang R, *et al.* Physical activity, sedentary time, and risk of colorectal cancer: the Singapore Chinese Health study. *Eur J Cancer Prev* 2017;26:469–75.
- 118 Wisløff U, Nilsen TIL, Drøystad WB, *et al.* A single weekly bout of exercise may reduce cardiovascular mortality: how little pain for cardiac gain? 'The HUNT study, Norway'. *Eur J Cardiovasc Prev Rehabil* 2006;13:798–804.
- 119 Bellocco R, Jia C, Ye W, *et al.* Effects of physical activity, body mass index, waist-to-hip ratio and waist circumference on total mortality risk in the Swedish national March cohort. *Eur J Epidemiol* 2010;25:777–88.
- 120 Bellocco R, Marrone G, Ye W, *et al.* A prospective cohort study of the combined effects of physical activity and anthropometric measures on the risk of postmenopausal breast cancer. *Eur J Epidemiol* 2016;31:395–404.
- 121 Borch KB, Weiderpass E, Braaten T, *et al.* Risk of lung cancer and physical activity by smoking status and body mass index, the Norwegian women and cancer study. *Eur J Epidemiol* 2019;34:489–98.
- 122 Hamer M, O'Donovan G, Stamatakis E. Association between physical activity and sub-types of cardiovascular disease death causes in a general population cohort. *Eur J Epidemiol* 2019;34:483–7.
- 123 Luoto R, Latikka P, Pukkala E, *et al.* The effect of physical activity on breast cancer risk: a cohort study of 30,548 women. *Eur J Epidemiol* 2000;16:973–80.
- 124 Allesøe K, Holtermann A, Aadahl M, *et al.* High occupational physical activity and risk of ischaemic heart disease in women: the interplay with physical activity during leisure time. *Eur J Prev Cardiol* 2015;22:1601–8.



- 125 Alvarez-Alvarez I, de Rojas JP, Fernandez-Montero A, *et al.* Strong inverse associations of Mediterranean diet, physical activity and their combination with cardiovascular disease: the Seguimiento Universidad de Navarra (sun) cohort. *Eur J Prev Cardiol* 2018;25:1186–97.
- 126 Hashibe M, Hunt J, Wei M, *et al.* Tobacco, alcohol, body mass index, physical activity, and the risk of head and neck cancer in the prostate, lung, colorectal, and ovarian (PLCO) cohort. *Head Neck* 2013;35:914–22.
- 127 Arem H, Moore SC, Park Y, *et al.* Physical activity and cancer-specific mortality in the NIH-AARP diet and health study cohort. *Int J Cancer* 2014;135:423–31.
- 128 Bergström A, Terry P, Lindblad P, *et al.* Physical activity and risk of renal cell cancer. *Int J Cancer* 2001;92:155–7.
- 129 Borch KB, Weiderpass E, Braaten T, *et al.* Physical activity and risk of endometrial cancer in the Norwegian women and cancer (NOWAC) study. *Int. J. Cancer* 2017;140:1809–18.
- 130 Calton BA, Lacey JV, Schatzkin A, *et al.* Physical activity and the risk of colon cancer among women: a prospective cohort study (United States). *Int. J. Cancer* 2006;119:385–91.
- 131 Du M, Kraft P, Eliassen AH, *et al.* Physical activity and risk of endometrial adenocarcinoma in the nurses' health study. *Int J Cancer* 2014;134:2707–16.
- 132 Friedenreich C, Cust A, Lahmann PH, *et al.* Physical activity and risk of endometrial cancer: the European prospective investigation into cancer and nutrition. *Int J Cancer* 2007;121:347–55.
- 133 Furberg A-S, Thune I. Metabolic abnormalities (hypertension, hyperglycemia and overweight), lifestyle (high energy intake and physical inactivity) and endometrial cancer risk in a Norwegian cohort. *Int J Cancer* 2003;104:669–76.
- 134 Gierach GL, Chang S-C, Brinton LA, *et al.* Physical activity, sedentary behavior, and endometrial cancer risk in the NIH-AARP diet and health study. *Int J Cancer* 2009;124:2139–47.
- 135 Giovannucci E, Liu Y, Platz EA, *et al.* Risk factors for prostate cancer incidence and progression in the health professionals follow-up study. *Int J Cancer* 2007;121:1571–8.
- 136 Holick CN, Giovannucci EL, Stampfer MJ, *et al.* Prospective study of body mass index, height, physical activity and incidence of bladder cancer in US men and women. *Int J Cancer* 2007;120:140–6.
- 137 Johnsen NF, Tjønneland A, Thomsen BLR, *et al.* Physical activity and risk of prostate cancer in the European prospective investigation into cancer and nutrition (EPIC) cohort. *Int J Cancer* 2009;125:902–8.
- 138 Nicodemus KK, Sweeney C, Folsom AR. Evaluation of dietary, medical and lifestyle risk factors for incident kidney cancer in postmenopausal women. *Int. J. Cancer* 2004;108:115–21.
- 139 Nilsen TIL, Romundstad PR, Vatten LJ. Recreational physical activity and risk of prostate cancer: a prospective population-based study in Norway (the HUNT study). *Int J Cancer* 2006;119:2943–7.
- 140 Patel AV, Feigelson HS, Talbot JT, *et al.* The role of body weight in the relationship between physical activity and endometrial cancer: results from a large cohort of US women. *Int J Cancer* 2008;123:1877–82.
- 141 Steindorf K, Friedenreich C, Linseisen J, *et al.* Physical activity and lung cancer risk in the European prospective investigation into cancer and nutrition cohort. *Int J Cancer* 2006;119:2389–97.
- 142 Steindorf K, Ritte R, Eomois P-P, *et al.* Physical activity and risk of breast cancer overall and by hormone receptor status: the European prospective investigation into cancer and nutrition. *Int J Cancer* 2013;132:1667–78.
- 143 Thune I, Lund E. The influence of physical activity on lung-cancer risk: a prospective study of 81,516 men and women. *Int J Cancer* 1997;70:57–62.
- 144 Wei EK, Giovannucci E, Wu K, *et al.* Comparison of risk factors for colon and rectal cancer. *Int J Cancer* 2004;108:433–42.
- 145 Khaw K-T, Jakes R, Bingham S, *et al.* Work and leisure time physical activity assessed using a simple, pragmatic, validated questionnaire and incident cardiovascular disease and all-cause mortality in men and women: the European prospective investigation into cancer in Norfolk prospective population study. *Int J Epidemiol* 2006;35:1034–43.
- 146 Liu S, Lee IM, Linson P, *et al.* A prospective study of physical activity and risk of prostate cancer in US physicians. *Int J Epidemiol* 2000;29:29–35.
- 147 Hu G, Tuomilehto J, Silventoinen K, *et al.* The effects of physical activity and body mass index on cardiovascular, cancer and all-cause mortality among 47 212 middle-aged Finnish men and women. *Int J Obes* 2005;29:894–902.
- 148 Rahman I, Bellavia A, Wolk A, *et al.* Physical activity and heart failure risk in a prospective study of men. *JACC Heart Fail* 2015;3:681–7.
- 149 Bennett DA, Du H, Clarke R, *et al.* Association of physical activity with risk of major cardiovascular diseases in Chinese men and women. *JAMA Cardiol* 2017;2:1349–58.
- 150 Gebel K, Ding D, Chey T, *et al.* Effect of moderate to vigorous physical activity on all-cause mortality in middle-aged and older Australians. *JAMA Intern Med* 2015;175:970–7.
- 151 O'Donovan G, Lee I-M, Hamer M, *et al.* Association of "Weekend Warrior" and Other Leisure Time Physical Activity Patterns With Risks for All-Cause, Cardiovascular Disease, and Cancer Mortality. *JAMA Intern Med* 2017;177:335–42.
- 152 Keum N, Bao Y, Smith-Warner SA, *et al.* Association of physical activity by type and intensity with digestive system cancer risk. *JAMA Oncol* 2016;2:1146–53.
- 153 Hayasaka S, Shibata Y, Ishikawa S, *et al.* Physical activity and all-cause mortality in Japan: the Jichi medical school (JMS) cohort study. *J Epidemiol* 2009;19:24–7.
- 154 Mok Y, Won S, Kimm H, *et al.* Physical activity level and risk of death: the Severance cohort study. *J Epidemiol* 2012;22:494–500.
- 155 Liu Y, Wen W, Gao Y-T, *et al.* Level of moderate-intensity leisure-time physical activity and reduced mortality in middle-aged and elderly Chinese. *J Epidemiol Community Health* 2018;72:13–20.
- 156 Paganini-Hill A, Perez Barreto M. Stroke risk in older men and women: aspirin, estrogen, exercise, vitamins, and other factors. *J Gender-Specific Med* 2001;4:18–28.
- 157 Baumeister SE, Schlesinger S, Aleksandrova K, *et al.* Association between physical activity and risk of hepatobiliary cancers: a multinational cohort study. *J Hepatol* 2019;70:885–92.
- 158 Borch KB, Lund E, Braaten T, *et al.* Physical activity and the risk of postmenopausal breast cancer - the Norwegian Women and Cancer Study. *J Negat Results Biomed* 2014;13:3.
- 159 Richard A, Martin B, Wanner M, *et al.* Effects of leisure-time and occupational physical activity on total mortality risk in NHANES III according to sex, ethnicity, central obesity, and age. *J Phys Act Health* 2015;12:184–92.
- 160 Rhee CW, Kim JY, Park BJ, *et al.* Impact of individual and combined health behaviors on all causes of premature mortality among middle aged men in Korea: the Seoul male cohort study. *J Prev Med Public Health* 2012;45:14–20.
- 161 Hotaling JM, Walsh TJ, Macleod LC, *et al.* Erectile dysfunction is not independently associated with cardiovascular death: data from the vitamins and lifestyle (vital) study. *J Sex Med* 2012;9:2104–10.
- 162 Chomistek AK, Manson JE, Stefanick ML, *et al.* Relationship of sedentary behavior and physical activity to incident cardiovascular disease: results from the women's health Initiative. *J Am Coll Cardiol* 2013;61:2346–54.
- 163 Lv J, Yu C, Guo Y, *et al.* Adherence to Healthy Lifestyle and Cardiovascular Diseases in the Chinese Population. *J Am Coll Cardiol* 2017;69:1116–25.
- 164 Pandey A, LaMonte M, Klein L, *et al.* Relationship between physical activity, body mass index, and risk of heart failure. *J Am Coll Cardiol* 2017;69:1129–42.
- 165 Chomistek AK, Cook NR, Rimm EB, *et al.* Physical activity and incident cardiovascular disease in women: is the relation modified by level of global cardiovascular risk? *J Am Heart Assoc* 2018;7:e008234.
- 166 Jeong H-G, Kim DY, Kang D-W, *et al.* Physical activity frequency and the risk of stroke: a nationwide cohort study in Korea. *J Am Heart Assoc* 2017;6:e005671.
- 167 Shiroma EJ, Sesso HD, Moorthy MV, *et al.* Do Moderate-Intensity and Vigorous-Intensity physical activities reduce mortality rates to the same extent? *J Am Heart Assoc* 2014;3:e000802.
- 168 Chiuve SE, Fung TT, Rexrode KM, *et al.* Adherence to a low-risk, healthy lifestyle and risk of sudden cardiac death among women. *JAMA* 2011;306:62–9.
- 169 Hu FB, Stampfer MJ, Colditz GA, *et al.* Physical activity and risk of stroke in women. *JAMA* 2000;283:2961–7.
- 170 Kujala UM, Kaprio J, Sarna S, *et al.* Relationship of leisure-time physical activity and mortality: the Finnish twin cohort. *JAMA* 1998;279:440–4.
- 171 Kushi LH, Fee RM, Folsom AR, *et al.* Physical activity and mortality in postmenopausal women. *JAMA* 1997;277:1287–92.
- 172 McTiernan A, Kooperberg C, White E, *et al.* Recreational physical activity and the risk of breast cancer in postmenopausal women: the women's health Initiative cohort study. *JAMA* 2003;290:1331–6.
- 173 Tanasescu M, Leitzmann MF, Rimm EB, *et al.* Exercise type and intensity in relation to coronary heart disease in men. *JAMA* 2002;288:1994–2000.
- 174 Maruti SS, Willett WC, Feskanich D, *et al.* A prospective study of age-specific physical activity and premenopausal breast cancer. *J Natl Cancer Inst* 2008;100:728–37.
- 175 Paganini-Hill A, Kawas CH, Corrada MM. Activities and mortality in the elderly: the leisure world cohort study. *J Gerontol A Biol Sci Med Sci* 2011;66A:559–67.
- 176 Lear SA, Hu W, Rangarajan S, *et al.* The effect of physical activity on mortality and cardiovascular disease in 130 000 people from 17 high-income, middle-income, and low-income countries: the PURE study. *Lancet* 2017;390:2643–54.
- 177 Wen CP, Wai JPM, Tsai MK, *et al.* Minimum amount of physical activity for reduced mortality and extended life expectancy: a prospective cohort study. *The Lancet* 2011;378:1244–53.
- 178 Artero EG, España-Romero V, Lee D-chul, *et al.* Ideal cardiovascular health and mortality: aerobics center longitudinal study. *Mayo Clin Proc* 2012;87:944–52.
- 179 Lee J-Y, Ryu S, Cheong E, *et al.* Association of physical activity and inflammation with all-cause, cardiovascular-related, and cancer-related mortality. *Mayo Clin Proc* 2016;91:1706–16.
- 180 Schmid D, Behrens G, Matthews CE, *et al.* Physical activity and risk of colon cancer in diabetic and nondiabetic us adults. *Mayo Clin Proc* 2016;91:1693–705.
- 181 McKenzie F, Biessy C, Ferrari P, *et al.* Healthy lifestyle and risk of cancer in the European prospective investigation into cancer and nutrition cohort study. *Medicine* 2016;95:e2850.
- 182 Bell EJ, Lutsey PL, Windham BG, *et al.* Physical activity and cardiovascular disease in African Americans in atherosclerosis risk in communities. *Med Sci Sports Exerc* 2013;45:901–7.

- 183 Chomistek AK, Cook NR, Flint AJ, *et al.* Vigorous-intensity leisure-time physical activity and risk of major chronic disease in men. *Med Sci Sports Exerc* 2012;44:1898–905.
- 184 Lee DAY, Rhee E-J, Cho JH, *et al.* Appropriate amount of regular exercise is associated with a reduced mortality risk. *Med Sci Sports Exerc* 2018;50:2451–8.
- 185 Lee IM, Paffenbarger RS. Physical activity and its relation to cancer risk: a prospective study of college alumni. *Med Sci Sports Exerc* 1994;26:831–6.
- 186 Autenrieth CS, Evenson KR, Yatsuya H, *et al.* Association between physical activity and risk of stroke subtypes: the Atherosclerosis risk in Communities study. *Neuroepidemiology* 2013;40:109–16.
- 187 Myint PK, Luben RN, Wareham NJ, *et al.* Combined work and leisure physical activity and risk of stroke in men and women in the European prospective investigation into Cancer-Norfolk prospective population study. *Neuroepidemiology* 2006;27:122–9.
- 188 Manson JE, Hu FB, Rich-Edwards JW, *et al.* A prospective study of walking as compared with vigorous exercise in the prevention of coronary heart disease in women. *N Engl J Med* 1999;341:650–8.
- 189 Thune I, Brenn T, Lund E, *et al.* Physical activity and the risk of breast cancer. *N Engl J Med* 1997;336:1269–75.
- 190 Folsom AR, Demissie Z, Harnack L. Glycemic Index, Glycemic Load, and Incidence of Endometrial Cancer: The Iowa Women's Health Study. *Nutr Cancer* 2003;46:119–24.
- 191 Holme I, Tonstad S. Increased predictive ability of BMI but not other risk factors with time in men: 39-year follow-up of total mortality in the Oslo study. *Obes Facts* 2014;7:311–21.
- 192 Sieverdes JC, Sui X, Lee D-chul, *et al.* Independent and joint associations of physical activity and fitness on stroke in men. *Phys Sportsmed* 2011;39:119–26.
- 193 Cook MB, Matthews CE, Gunja MZ, *et al.* Physical activity and sedentary behavior in relation to esophageal and gastric cancers in the NIH-AARP cohort. *PLoS One* 2013;8:e84805.
- 194 Holtermann A, Marott JL, Gyntelberg F, *et al.* Does the benefit on survival from leisure time physical activity depend on physical activity at work? A prospective cohort study. *PLoS One* 2013;8:e54548.
- 195 Park S, Nam B-H, Yang H-R, *et al.* Individualized risk prediction model for lung cancer in Korean men. *PLoS One* 2013;8:e54823.
- 196 Rangul V, Sund ER, Mork PJ, *et al.* The associations of sitting time and physical activity on total and site-specific cancer incidence: results from the HUNT study, Norway. *PLoS One* 2018;13:e0206015.
- 197 Saevereid HA, Schnohr P, Prescott E. Speed and duration of walking and other leisure time physical activity and the risk of heart failure: a prospective cohort study from the Copenhagen City heart study. *PLoS One* 2014;9:e89909.
- 198 Williams PT. Dose-Response relationship of physical activity to premature and total all-cause and cardiovascular disease mortality in walkers. *PLoS One* 2013;8:e78777.
- 199 Alvarez-Alvarez I, Zazpe I, Pérez de Rojas J, *et al.* Mediterranean diet, physical activity and their combined effect on all-cause mortality: the Seguimiento Universidad de Navarra (sun) cohort. *Prev Med* 2018;106:45–52.
- 200 Gero K, Iso H, Kitamura A, *et al.* Cardiovascular disease mortality in relation to physical activity during adolescence and adulthood in Japan: does school-based sport Club participation matter? *Prev Med* 2018;113:102–8.
- 201 Renninger M, Lochen M-L, Ekelund U, *et al.* The independent and joint associations of physical activity and body mass index with myocardial infarction: the Tromsø study. *Prev Med* 2018;116:94–8.
- 202 Wanner M, Tarnutzer S, Martin BW, *et al.* Impact of different domains of physical activity on cause-specific mortality: a longitudinal study. *Prev Med* 2014;62:89–95.
- 203 Wu C-Y, Hu H-Y, Chou Y-C, *et al.* The association of physical activity with all-cause, cardiovascular, and cancer mortalities among older adults. *Prev Med* 2015;72:23–9.
- 204 Hillsdon M, Thorogood M, Murphy M, *et al.* Can a simple measure of vigorous physical activity predict future mortality? results from the OXCHECK study. *Public Health Nutr* 2004;7:557–62.
- 205 Carlsson S, Andersson T, Wolk A, *et al.* Low physical activity and mortality in women: baseline lifestyle and health as alternative explanations. *Scand J Public Health* 2006;34:480–7.
- 206 Schnohr P, Grønbaek M, Petersen L, *et al.* Physical activity in leisure-time and risk of cancer: 14-year follow-up of 28,000 Danish men and women. *Scand J Public Health* 2005;33:244–9.
- 207 Ou S-M, Chen Y-T, Shih C-J, *et al.* Impact of physical activity on the association between lipid profiles and mortality among older people. *Sci Rep* 2017;7:8399.
- 208 Zhou Y, Zhang R, Liu Y, *et al.* Association of regular physical activity with total and cause-specific mortality among middle-aged and older Chinese: a prospective cohort study. *Sci Rep* 2017;7:39939.
- 209 Hu G, Sarti C, Jousilahti P, *et al.* Leisure time, occupational, and commuting physical activity and the risk of stroke. *Stroke* 2005;36:1994–9.
- 210 Huerta JM, Chirlaque M-D, Tormo M-J, *et al.* Physical activity and risk of cerebrovascular disease in the European prospective investigation into cancer and Nutrition-Spain study. *Stroke* 2013;44:111–8.
- 211 Lee IM, Paffenbarger RS. Physical activity and stroke incidence: the Harvard alumni health study. *Stroke* 1998;29:2049–54.
- 212 McDonnell MN, Hillier SL, Hooker SP, *et al.* Physical activity frequency and risk of incident stroke in a national US study of blacks and whites. *Stroke* 2013;44:2519–24.
- 213 Rist PM, Lee I-M, Kase CS, *et al.* Physical activity and functional outcomes from cerebral vascular events in men. *Stroke* 2011;42:3352–6.
- 214 Tikk K, Sookthai D, Monni S, *et al.* Primary preventive potential for stroke by avoidance of major lifestyle risk factors: the European prospective investigation into cancer and Nutrition-Heidelberg cohort. *Stroke* 2014;45:2041–6.
- 215 Kunzmann AT, Mallon KP, Hunter RF, *et al.* Physical activity, sedentary behaviour and risk of oesophago-gastric cancer: a prospective cohort study within UK Biobank. *United European Gastroenterol J* 2018;6:1144–54.
- 216 Grotta A, Bottai M, Adami H-O, *et al.* Physical activity and body mass index as predictors of prostate cancer risk. *World J Urol* 2015;33:1495–502.
- 217 Golubic R, May AM, Benjaminsen Borch K, *et al.* Validity of electronically administered recent physical activity questionnaire (RPAQ) in ten European countries. *PLoS One* 2014;9:e92829.
- 218 Holtermann A, Schnohr P, Nordestgaard BG, *et al.* The physical activity paradox in cardiovascular disease and all-cause mortality: the contemporary Copenhagen General Population Study with 104 046 adults. *Eur Heart J* 2021;42:1499–511.
- 219 Geidl W, Schlesinger S, Mino E, *et al.* Dose–response relationship between physical activity and mortality in adults with noncommunicable diseases: a systematic review and meta-analysis of prospective observational studies. *Int J Behav Nutr Phys Act* 2020;17:109.
- 220 Strain T, Wijndaele K, Sharp SJ, *et al.* Impact of follow-up time and analytical approaches to account for reverse causality on the association between physical activity and health outcomes in UK Biobank. *Int J Epidemiol* 2020;49:162–72.
- 221 Strain T, Wijndaele K, Dempsey PC, *et al.* Wearable-device-measured physical activity and future health risk. *Nat Med* 2020;26:1385–91.
- 222 Mok A, Khaw K-T, Luben R, *et al.* Physical activity trajectories and mortality: population based cohort study. *BMJ* 2019;80:12323.
- 223 Ekelund U, Tarp J, Steene-Johannessen J, *et al.* Dose-Response associations between accelerometry measured physical activity and sedentary time and all cause mortality: systematic review and harmonised meta-analysis. *BMJ* 2019;366:14570.
- 224 Troiano RP, McClain JJ, Brychta RJ, *et al.* Evolution of accelerometer methods for physical activity research. *Br J Sports Med* 2014;48:1019–23.